

Loyalist (West) Secondary Plan Update Virtual Public Information Centre (PIC) #1

February 2, 2022

4:00 PM – 6:00 PM



Agenda

1. Introductions

2. Statement of Land Acknowledgement

3. Project Overview

- What is a Secondary Plan? What is the Loyalist Secondary Plan (2010)?
- Project Purpose
- Community Engagement and Consultation
- Project Timeline

4. Interactive Polling on Secondary Planning Themes

5. Next Steps

Introductions

Rory Baksh
Project Manager
rbaksh@dillon.ca



Amy Greenberg
Planner
agreenberg@dillon.ca



Desta McAdam
Project Manager
dmcadam@belleville.ca

Jessica Young
Development Engineer
jyoung@belleville.ca

Statement of Land Acknowledgement

Although this meeting is being held virtually, each of us on this call should take this opportunity to reflect and to consider the land upon which we are standing or seated, wherever we are, and to consider all of those who have lived from that land over the generations, and to consider especially the First Nations people whose ancestral homes and hunting lands these are. On behalf of the majority of people who are present in the City of Belleville, I would like to honour and thank the Mohawk people of Tyendinaga for welcoming us as neighbours to these lands upon which we live, here in the Bay of Quinte.

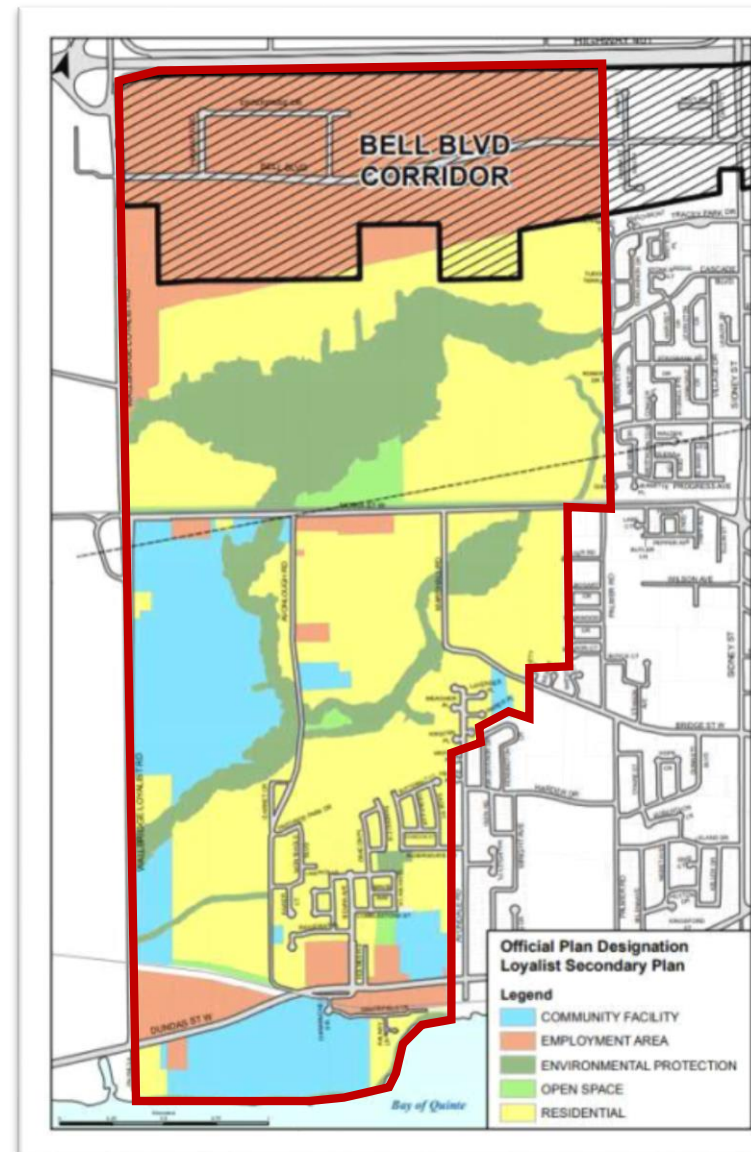
Project Overview: What is a Secondary Plan?

A **Secondary Plan** is the long term vision for growth and development of a specific area within a municipality, which may have detailed policies that guide:

- Land use and built form
- Environmental protection
- Open space networks
- Natural and man-made hazard lands
- Natural and built heritage
- Infrastructure and servicing

Project Overview: What is the Loyalist Secondary Plan (2010)?

- West of the existing built-up area of Belleville, intended to serve long-term growth
- Aligned with the 2002 Official Plan
- Contains policies on:
 - Land use
 - General development
 - Public infrastructure and utilities
 - The transportation system
 - Development phasing
- Maps show the planned land use and infrastructure



Loyalist Secondary Plan
(2010)

Land use map
(Schedule A)

Project Overview: Project Purpose

- Update the Secondary Plan to align with:
 - Provincial interests (i.e., Provincial Policy Statement, 2020)
 - City's New Official Plan (November 2021)
- Grow compatibly with neighbouring land uses while existing natural features (e.g., Potter's Creek) are respected
- Integrate the expanding Loyalist College campus into future development
- Coordinate with Bell Boulevard / North Front Street Corridor Study (in progress)



Loyalist College



Potters Creek

Project Overview: Community Engagement and Consultation

- **Round 1: Introduction, Vision Statement and Goals**
- **Round 2: Preferred Land Use Concept**
- **Round 3: Present Secondary Plan**



Objectives:

- Open, inclusive, transparent
- Keep the public and stakeholders well informed
- Provide multiple opportunities for active participation
- Focus engagement activities for meaningful involvement in the decision-making process



Project Overview: Project Timeline

- The project began in Fall 2021 and is anticipated to be completed by Winter 2023

Phase 1: Project Launch September 2021	Phase 2: Existing Conditions October '21 – February '22	Phase 3: Land Use Concept February '22 – September '22	Phase 4: Strategic Framework September '22 – February '23
<ul style="list-style-type: none"> • Project start-up • Background data gathering 	<ul style="list-style-type: none"> • Background Review and Reports • Launch Project Website • Public Engagement Event #1: Vision and Goals 	<ul style="list-style-type: none"> • Future Condition Report • Preliminary Land Use Concepts • Stakeholder Meetings • Public Engagement Event #2: Present Preliminary Land Use Concept • Technical Analysis 	<ul style="list-style-type: none"> • Secondary Plan refinement • Stakeholder Meetings • Public Engagement Event #3: Present the Secondary Plan Update / Statutory Public Meeting • Finalize and issue the Secondary Plan for Council adoption/approval



We are here

Any questions on:

What is a Secondary Plan?

What is the Loyalist Secondary Plan (2010)?

The purpose of the project?

The opportunities for public/stakeholder engagement?

Interactive Polling on Secondary Planning Themes

Interactive Polling on Secondary Planning Themes

Belleville in the early-mid 2000's

- Affordable community
- Modest pace of growth
- Car-dependent / suburban form of new growth
- Stable economic base (in an economy continually shifting from production to goods movement)

Belleville today

- Rising costs and housing affordability concerns
- Impacts of climate change
- Emerging mobility options
- New approaches to work and prosperity
- Focus on community health and wellness

Retirement building at 24 Dundas St W



The upcoming interactive poll will canvas your thoughts on how the Loyalist (West) Secondary Plan can better respond to our needs...

Poll #1: Neighbourhoods

What housing types should be prioritized in Loyalist West (select all that apply)?

- A. One-unit dwellings (e.g., single-detached, semi-detached)
- B. Townhouse dwellings
- C. Low-rise and mid-rise apartment buildings
- D. High-rise apartment buildings

Poll #2: Neighbourhoods

What housing mix would you like to see in residential areas of Loyalist West?

- A. Mix of housing types and densities – every block could be slightly different (heterogeneous)
- B. Consistent form of housing and density – neighbourhoods are mostly the same, and just a handful of areas have varying forms (homogeneous)



Glacier Ridge in Calgary, Alberta

Poll #3: Neighbourhoods

What is your opinion about neighbourhood amenities in Loyalist West?

- A. I think neighbourhood amenities in small nodes work best, since they are feasible to develop and can be better distributed through the area.
- B. I think we should try to develop neighbourhood amenities along a main street configuration, even though this might mean that some people might not have as easy access to these amenities.
- C. No opinion / doesn't matter to me.



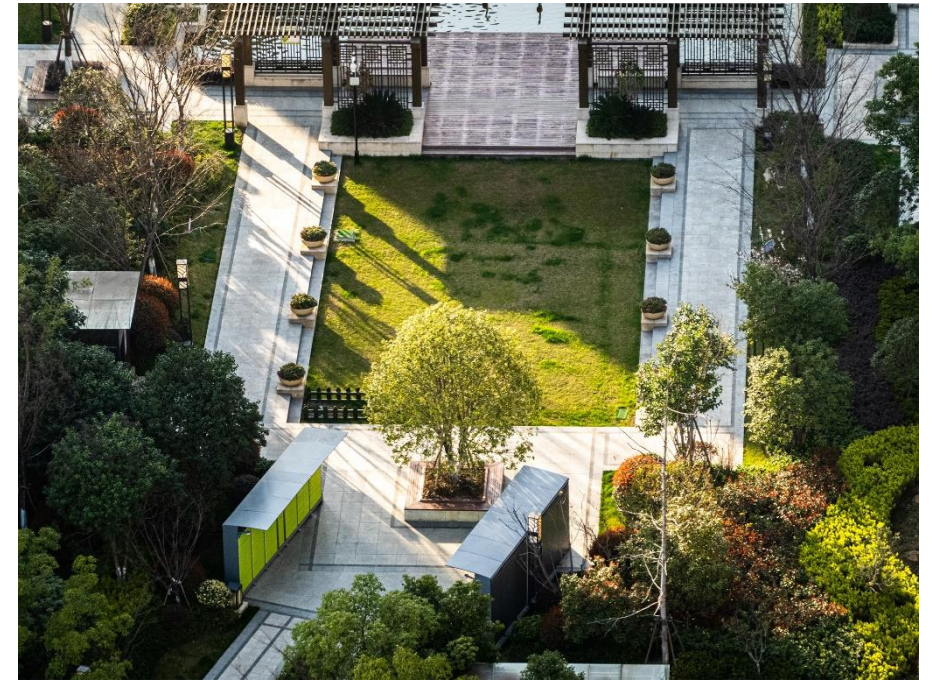
Amenity node in Riverside South, Ottawa

DISCUSSION & OBSERVATIONS: NEIGHBOURHOODS

Poll #4: Open Space

What types of open spaces would you like to see prioritized in Loyalist West (select all that apply)?

- A. Many pocket parks dispersed throughout
- B. Larger parks that serve the whole community
- C. Open spaces that support active recreational uses (e.g., basketball courts, soccer fields, baseball fields)
- D. Multi-use trails that interconnect neighbourhoods
- E. Multi-use trails that link to/align with environmental protection areas (e.g., a multi-use trail along Potter's Creek)



Pocket park in Melbourne, Australia

Poll #5: Transportation and Mobility

What mindset do you have on planning for roads, public transit, and other mobility choices in the Loyalist West area?

- A. Even if millennials and an aging population mean lower levels of average car ownership, the Loyalist West area will predominantly be families – and practically speaking, we need generous road space to handle all of that traffic, because families own cars. Transit and cycling will just fit into this mix.
- B. There will be less personal vehicle usage, given delivery services, work-from-home, dial-a-ride, and automated cars in the future – let's not overbuild on roads now, and instead, let's start focusing on prioritizing transit and cycling.

Poll #6: Relationship with Loyalist College

What do you think is the ideal relationship with Loyalist College for this plan?

- A. Loyalist College is an activity centre – over time, the college and the Loyalist West neighbourhoods can integrate (e.g., Queen’s, Dalhousie U).
- B. Loyalist College is a campus – the neighbourhoods and the college are their own entities (e.g., Carleton University, Algonquin College).
- C. Neither / no opinion.



Algonquin College, Ottawa

DISCUSSION & OBSERVATIONS: OPEN SPACE, MOBILITY, THE COLLEGE

Next Steps

- Prepare a summary of what we heard from this engagement event
- Begin drafting an interim report to summarize the work completed to date
- Begin framing a refreshed vision for the Loyalist (West) Secondary Plan area
- Create a preliminary plan and test the viability of servicing it with infrastructure

Questions or comments?

call us:

613-967-3200 x 3288

email us:

planning@belleville.ca

visit the project website:

<https://www.belleville.ca/en/do-business/loyalist-secondary-plan-lsp-update.aspx>

Thank you for participating!