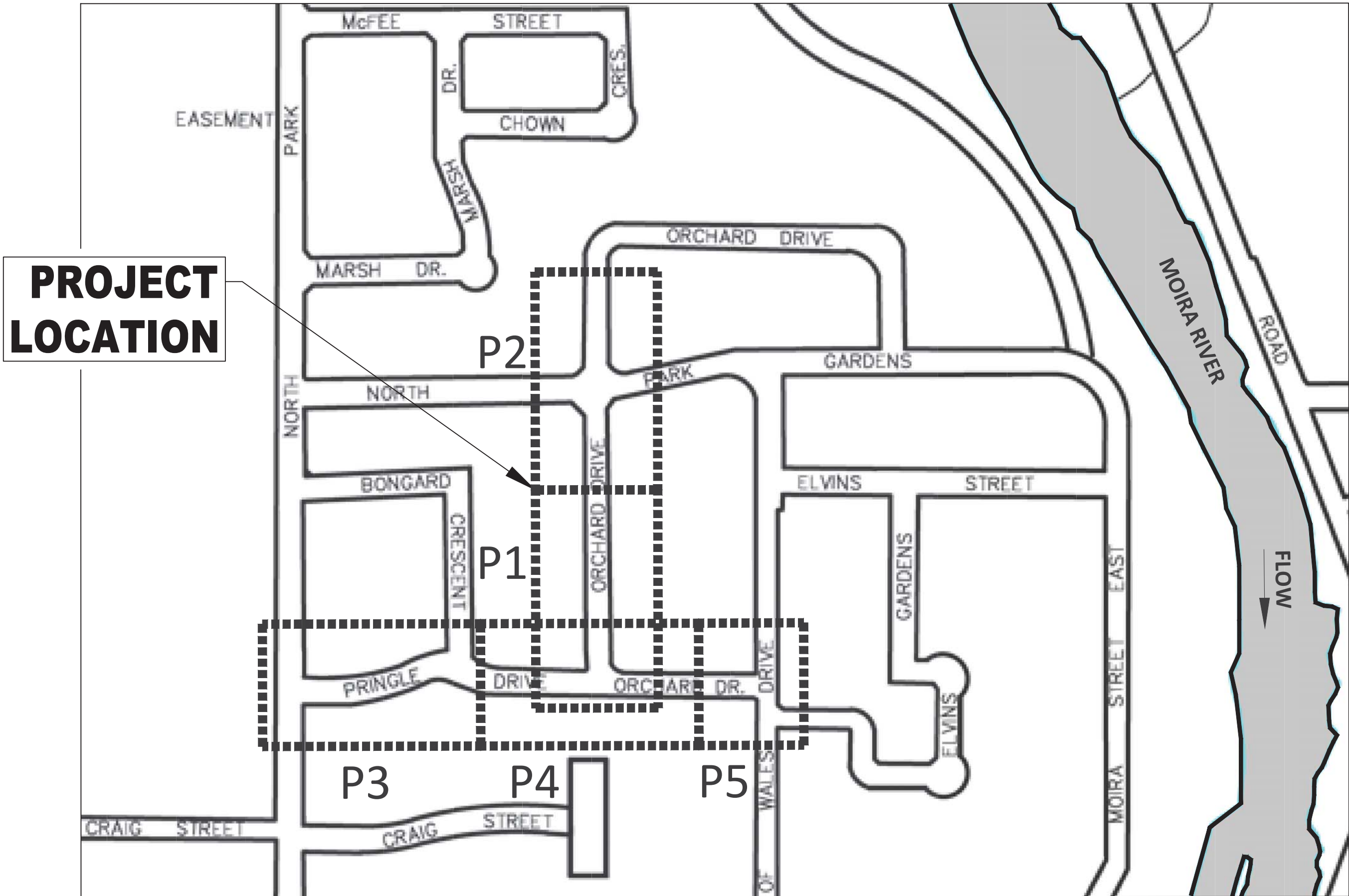


ORCHARD DRIVE & PRINGLE DRIVE

ROAD RECONSTRUCTION



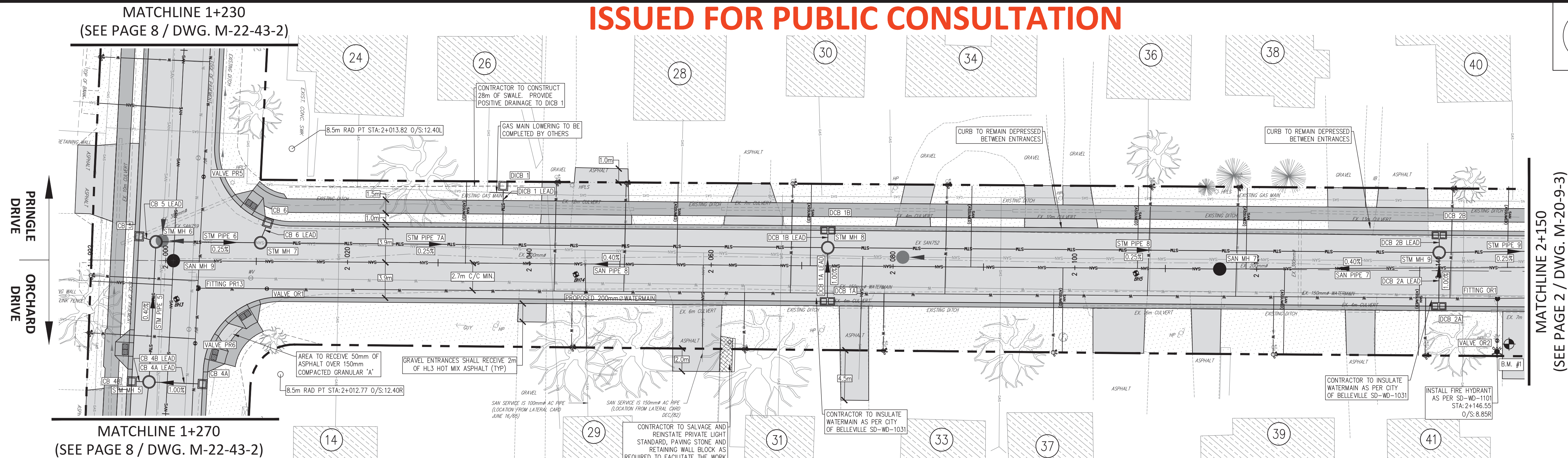
DRAWING LIST:

PAGE	PLAN INDEX	DRAWING DESCRIPTION
P1	M-20-9-2	ORCHARD DRIVE - P&P 1+992 to 2+150
P2	M-20-9-3	ORCHARD DRIVE - P&P 2+150 to 2+300
P3	M-22-43-1	PRINGLE DRIVE - P&P 0+990 to 1+150
P4	M-22-43-2	PRINGLE DRIVE - P&P 1+150 to 1+310
P5	M-20-9-1	ORCHARD DRIVE - P&P 1+300 to 1+388
P6	N/A	LEGEND & TYPICAL CROSS SECTIONS

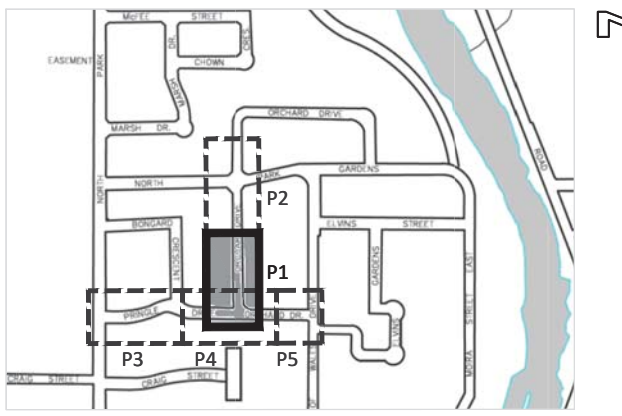


ENGINEERING &
DEVELOPMENT
SERVICES

ISSUED FOR PUBLIC CONSULTATION



KEY PLAN



- GENERAL NOTES:
- UNLESS OTHERWISE NOTED ALL EXISTING SANITARY SEWER STRUCTURES AND PIPES ARE TO BE REMOVED WITHIN THE CONTRACT LIMITS.
 - UNLESS OTHERWISE NOTED ALL EXISTING STORM SEWER STRUCTURES AND PIPES ARE TO BE REMOVED WITHIN THE CONTRACT LIMITS.
 - UNLESS OTHERWISE NOTED ALL EXISTING ENTRANCE CULVERTS AND ASSOCIATED HEADWALLS ARE TO BE REMOVED WITHIN THE CONTRACT LIMITS.
 - WHERE CONCRETE ENTRANCE CURBS OR PRIVATE WALKWAYS INTERFERE WITH PROPOSED WORK THEY ARE TO BE REMOVED AS REQUIRED AND REINSTATED TO MATCH TO PROPOSED CONDITIONS.
 - WHERE NEWLY CONSTRUCTED WATERMANS PASS UNDER SEWERS THERE SHALL BE:
 - A MINIMUM OF 0.5m OF VERTICAL SEPARATION BETWEEN THE INVERT OF THE SEWER AND THE CROWN OF THE WATERMAN.
 - A FULL LENGTH OF WATER PIPE SHALL BE CENTRED AT THE POINT OF CROSSING SO THAT THE JOINTS WILL BE EQUIDISTANT AND AS FAR AS POSSIBLE FROM THE SEWER.
 - NOT ALL EXISTING SANITARY SERVICES HAVE BEEN INDICATED ON THE CONTRACT DRAWINGS AND THOSE THAT HAVE BEEN SHOWN ARE APPROXIMATE ONLY. THE CONTRACTOR SHALL BE REQUIRED TO LOCATE AND REPLACE ALL SANITARY SERVICES WITHIN THE CONTRACT LIMITS. THE CONTRACTOR SHALL BE COMPENSATED AT THE CONTRACT RATES FOR THIS WORK.
 - ALL SIDEWALK SHALL BE AS PER OPSD 310.010/310.020 ALL SIDEWALK CURB RAMPS SHALL BE AS PER OPSD 310.033 AND INSTALLED WITH TACTILE PLATES AS PER OPSD 310.039

PROPOSED WATERMAIN

NAME	DESCRIPTION	STATION / OFFSET
FITTING PR13	200X200mm \varnothing TEE	1+256.03 / -2.83
FITTING OR1	200X150mm \varnothing TEE	2+146.56 / 3.00

PROPOSED WATERMAIN VALVE TABLE

NAME	DESCRIPTION	STATION / OFFSET
VALVE OR1	200mm \varnothing GATE VALVE	2+011.19 / 3.01
VALVE OR2	150mm \varnothing GATE VALVE	2+146.56 / 7.65

PROPOSED STORM SEWER STRUCTURE TABLE

NAME	DESCRIPTION	STATION / OFFSET	T/G ELEV	INV ELEV	PIPE SIZES
CB 5	CATCH BASIN C/W FRAME AND GRATE AS PER OPSD 705.010/400.020	1+250.66 / 3.90	99.491	N INV: 98.246	300mm \varnothing
STM MH 6	MAINTENANCE HOLE C/W FRAME AND TYPE B OPEN COVER AS PER OPSD 701.010/401.010 BENCHING AS PER OPSD 701.021	1+251.17 / 2.02	99.479	N INV: 98.153 E INV: 98.217 S INV: 98.236	375mm \varnothing 375mm \varnothing 300mm \varnothing
STM MH 7	MAINTENANCE HOLE C/W FRAME AND TYPE B OPEN COVER AS PER OPSD 701.010/401.010 BENCHING AS PER OPSD 701.021	2+010.46 / -2.04	99.427	N INV: 98.049 S INV: 98.128 W INV: 98.207	450mm \varnothing 375mm \varnothing 300mm \varnothing
CB 6	CATCH BASIN C/W FRAME AND GRATE AS PER OPSD 705.010/400.020	2+011.24 / -4.25	99.369	E INV: 98.225	300mm \varnothing
STM MH 8	MAINTENANCE HOLE C/W FRAME AND TYPE B OPEN COVER AS PER OPSD 701.010/401.010 BENCHING AS PER OPSD 701.021	2+072.85 / -2.00	98.953	S INV: 97.896 N INV: 97.818 E INV: 97.975 W INV: 97.975	450mm \varnothing 525mm \varnothing 375mm \varnothing 375mm \varnothing
DCB 1B	TWIN INLET CATCH BASIN C/W FRAME AND GRATE AS PER OPSD 705.020/400.020	2+072.85 / -3.90	98.915	E INV: 97.985	375mm \varnothing
DCB 1A	TWIN INLET CATCH BASIN C/W FRAME AND GRATE AS PER OPSD 705.020/400.020	2+072.85 / 3.90	98.915	W INV: 98.025	375mm \varnothing
STM MH 9	MAINTENANCE HOLE C/W FRAME AND TYPE B OPEN COVER AS PER OPSD 701.010/401.010 BENCHING AS PER OPSD 701.021	2+140.11 / -2.00	98.950	E INV: 97.807 S INV: 97.652 N INV: 97.649 W INV: 97.800	375mm \varnothing 525mm \varnothing 525mm \varnothing 375mm \varnothing
DCB 2B	TWIN INLET CATCH BASIN C/W FRAME AND GRATE AS PER OPSD 705.020/400.020	2+140.11 / -3.90	98.912	E INV: 97.810	375mm \varnothing
DCB 2A	TWIN INLET CATCH BASIN C/W FRAME AND GRATE AS PER OPSD 705.020/400.020	2+140.11 / 3.90	98.912	W INV: 97.857	375mm \varnothing

PROPOSED STORM SEWER PIPE TABLE

NAME	FROM	TO	SIZE	LENGTH	SLOPE
CB 5 LEAD	CB 5	STM MH 6	300 mm \varnothing	0.57m	1.00%
CB 6 LEAD	CB 6	STM MH 7	300 mm \varnothing	1.38m	1.00%
DCB 1A LEAD	DCB 1A	STM MH 8	375 mm \varnothing	4.55m	1.00%
DCB 1B LEAD	DCB 1B	STM MH 8	375 mm \varnothing	0.93m	1.00%
DCB 2A LEAD	DCB 2A	STM MH 9	375 mm \varnothing	4.55m	1.00%
DCB 2B LEAD	DCB 2B	STM MH 9	375 mm \varnothing	0.93m	1.00%
DCB 1 LEAD	DCB 1	450X300 TEE	300 mm \varnothing	6.10m	1.00%
STM PIPE 6	STM MH 6	STM MH 7	375 mm \varnothing	10.31m	0.25%
STM PIPE 7A	STM MH 7	450X300 TEE	450 mm \varnothing	26.03m	0.25%
STM PIPE 7B	450X300 TEE	STM MH 8	450 mm \varnothing	35.16m	0.25%
STM PIPE 8	STM MH 8	STM MH 9	525 mm \varnothing	66.06m	0.25%
STM PIPE 9	STM MH 9	EX. STORM SEWER	525 mm \varnothing	77.74m	0.25%

PROPOSED SANITARY SEWER

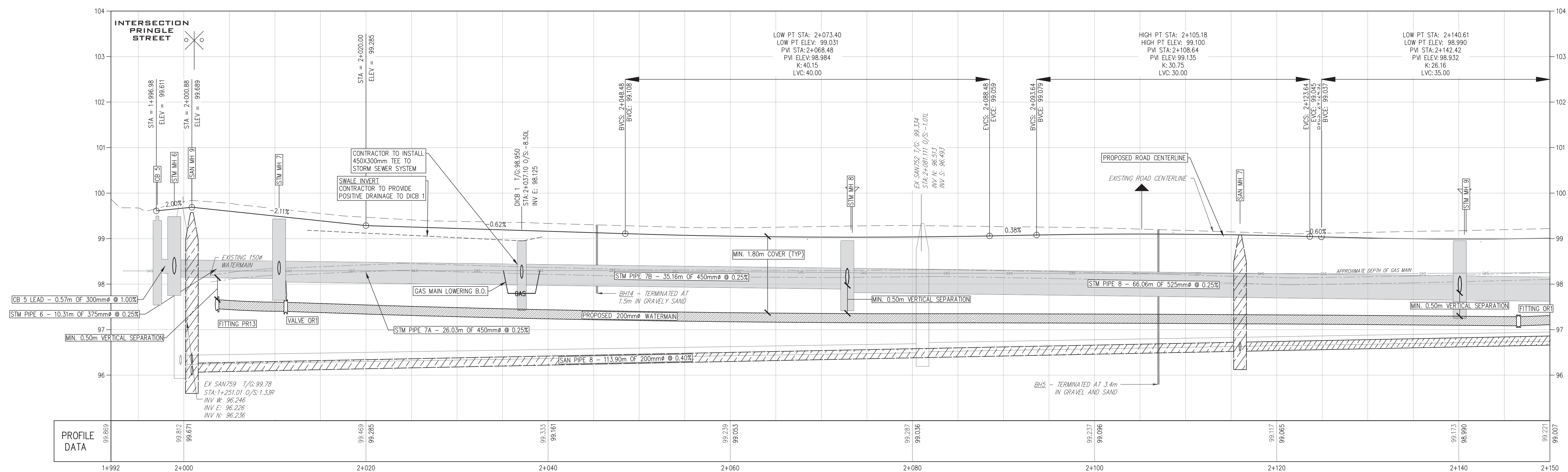
PROPOSED SANITARY SEWER STRUCTURE TABLE

NAME	DESCRIPTION	STATION / OFFSET	T/G ELEV	INV ELEV	PIPE SIZES
SAN MH 7	MAINTENANCE HOLE C/W FRAME AND TYPE A CLOSED COVER AS PER OPSD 701.010/401.010	2+115.98 / 0.01	99.080	N INV: 96.526 S INV: 96.521	200mm \varnothing 200mm \varnothing
SAN MH 9	MAINTENANCE HOLE C/W FRAME AND TYPE A CLOSED COVER AS PER OPSD 701.010/401.010	1+253.15 / 0.00	99.571	N INV: 96.066 E INV: 95.999 W INV: 96.255	200mm \varnothing 200mm \varnothing 200mm \varnothing

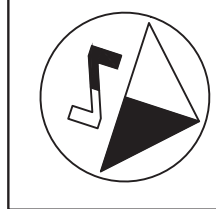
PROPOSED SANITARY SEWER PIPE TABLE

NAME	FROM	TO	SIZE	LENGTH	SLOPE
SAN PIPE 7	EX. SAN746	SAN MH 7	200 mm \varnothing	101.92m	0.40%
SAN PIPE 8	SAN MH 7	SAN MH 9	200 mm \varnothing	113.90m	0.40%

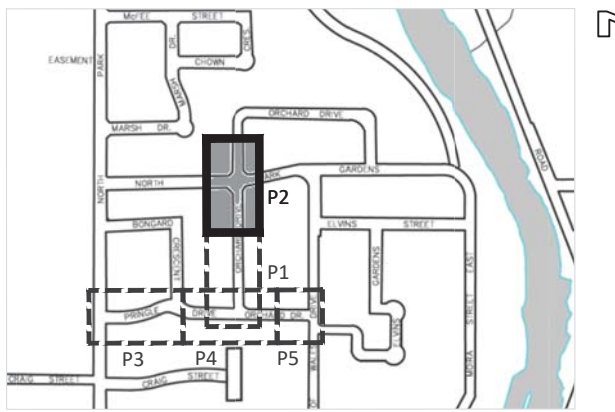
ORCHARD DRIVE



ISSUED FOR PUBLIC CONSULTATION



KEY PLAN



GENERAL NOTES:

- UNLESS OTHERWISE NOTED ALL EXISTING SANITARY SEWER STRUCTURES AND PIPES ARE TO BE REMOVED WITHIN THE CONTRACT LIMITS.
- UNLESS OTHERWISE NOTED ALL EXISTING STORM SEWER STRUCTURES AND PIPES ARE TO BE REMOVED WITHIN THE CONTRACT LIMITS.
- UNLESS OTHERWISE NOTED ALL EXISTING ENTRANCE CULVERTS AND ASSOCIATED HEADWALLS ARE TO BE REMOVED WITHIN THE CONTRACT LIMITS.
- WHERE CONCRETE ENTRANCE CURBS OR PRIVATE WALKWAYS INTERFERE WITH PROPOSED WORK THEY ARE TO BE REMOVED AS REQUIRED AND REINSTATED TO MATCH TO PROPOSED CONDITIONS.
- WHERE NEWLY CONSTRUCTED WATERMANS PASS UNDER SEWERS THERE SHALL BE:
 - A MINIMUM OF 0.5m OF VERTICAL SEPARATION BETWEEN THE INVERT OF THE SEWER AND THE CROWN OF THE WATERMAN.
 - A FULL LENGTH OF WATER PIPE SHALL BE CENTRED AT THE POINT OF CROSSING SO THAT THE JOINTS WILL BE EQUIDISTANT AND AS FAR AS POSSIBLE FROM THE SEWER.
- NOT ALL EXISTING SANITARY SERVICES HAVE BEEN INDICATED ON THE CONTRACT DRAWINGS AND THOSE THAT HAVE BEEN SHOWN ARE APPROXIMATE ONLY. THE CONTRACTOR SHALL BE REQUIRED TO LOCATE AND REPLACE ALL SANITARY SERVICES WITHIN THE CONTRACT LIMITS. THE CONTRACTOR SHALL BE COMPENSATED AT THE CONTRACT RATES FOR THIS WORK.
- ALL SIDEWALK SHALL BE AS PER OPSD 310.010/310.020 ALL SIDEWALK CURB RAMP SHALL BE AS PER OPSD 310.033 AND INSTALLED WITH TACTILE PLATES AS PER OPSD 310.039.

B.M. #2

TOP NUT OF EXISTING FIRE HYDRANT LOCATED IN FRONT OF CIVIC #59 HAS AN ELEVATION OF 102.175

B.M. #3

TOP NUT OF EXISTING FIRE HYDRANT LOCATED IN FRONT OF CIVIC #59 HAS AN ELEVATION OF 101.340

4	ISSUED FOR WATER MAIN APPROVAL	02/23/21	CEH
3	ISSUED FOR EOE APPROVAL	10/07/20	CEH
2	ISSUED FOR REVIEW	05/21/20	CEH
1	ISSUED FOR REVIEW	03/30/20	CEH

NO.	REVISIONS	MM/DD/YY	INITIAL
-----	-----------	----------	---------

- NOTES:
- DIMENSIONS ARE IN METRES UNLESS OTHERWISE STATED.
 - REFER TO DRAWING No. 10 FOR LEGEND.
 - THIS DRAWING IS TO BE READ AND UNDERSTOOD IN CONJUNCTION WITH ALL OTHER PLANS AND DOCUMENTS APPLICABLE TO THIS PROJECT.

CAUTION:

THE LOCATION OF UTILITIES IS APPROXIMATE ONLY, AND THE EXACT LOCATION SHOULD BE DETERMINED BY CONSULTING THE MUNICIPAL AUTHORITIES AND UTILITY COMPANIES CONCERNED. THE CONTRACTOR IS RESPONSIBLE TO PROVIDE THE LOCATION AND STATUS OF UTILITIES AND SHALL BE RESPONSIBLE FOR ADEQUATE PROTECTION OF PLANT AND EQUIPMENT FROM DAMAGE.

DATE	MARCH 2020	H.SCALE	1:250	V.SCALE	1:50
DESIGN	CEH	DRAWN	CEH	APPROVED	

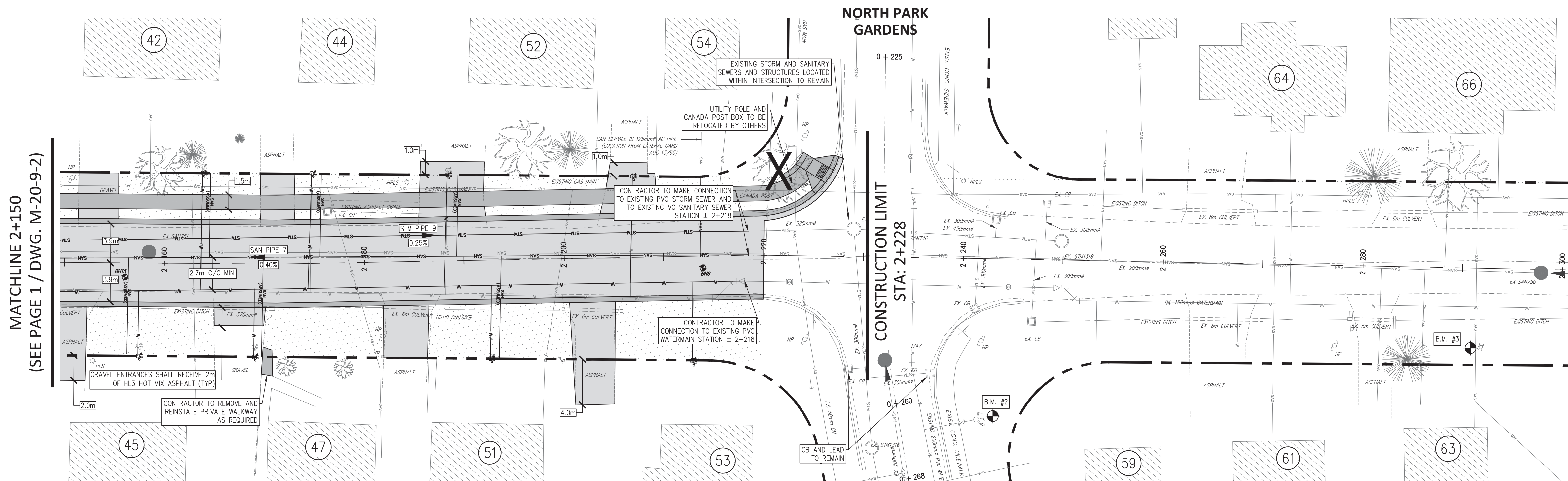


CITY OF BELLEVILLE
ENGINEERING & DEVELOPMENT
SERVICES DEPARTMENT

ORCHARD DRIVE & PRINGLE DRIVE
RECONSTRUCTION

PLAN/PROFILE
STATION 2+150 TO 2+300

DRAWING No. M-20-9-3 SHEET No. 2 OF 6



PROPOSED WATERMAIN

PROPOSED WATERMAIN FITTING TABLE		
NAME	DESCRIPTION	STATION / OFFSET
FITTING OR2	200X150mm Tee	2+292.16 / 3.12

PROPOSED WATERMAIN VALVE TABLE		
NAME	DESCRIPTION	STATION / OFFSET
VALVE OR3	150mm GATE VALVE	2+292.03 / 7.98

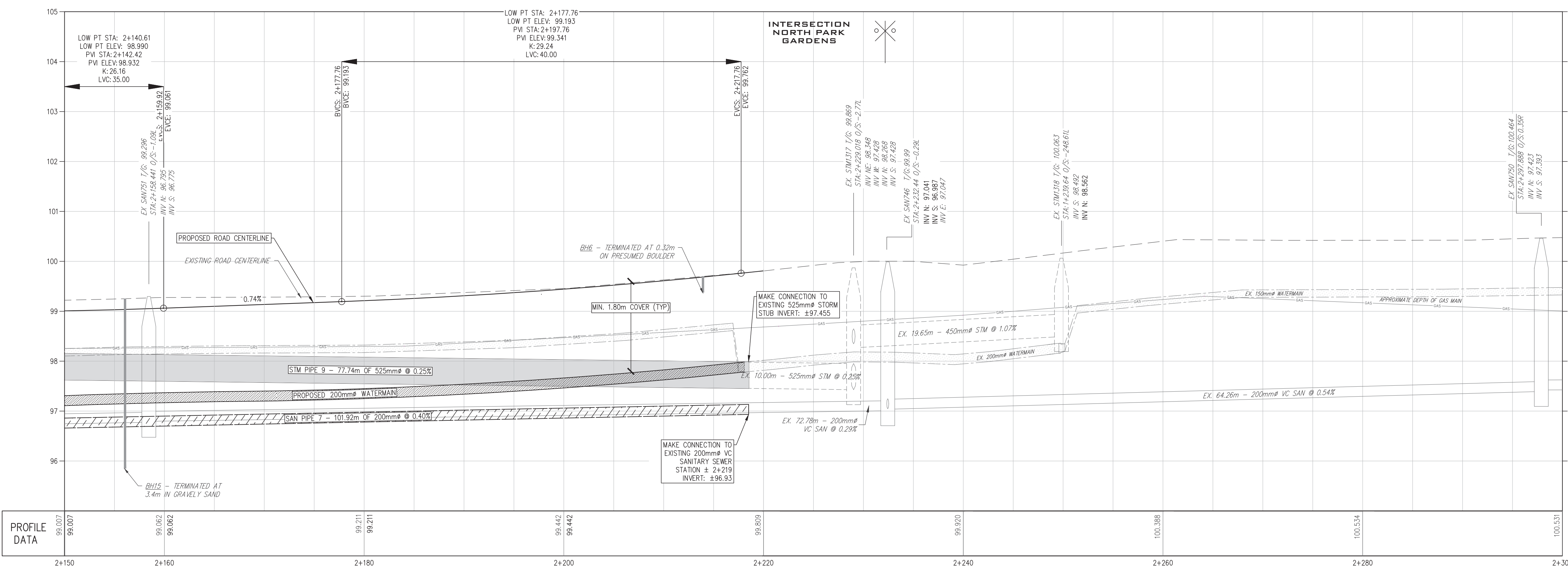
PROPOSED STORM SEWER

PROPOSED STORM SEWER PIPE TABLE					
NAME	FROM	TO	SIZE	LENGTH	SLOPE
STM PIPE 9	STM MH 9	EX. STM STUB	525 mm Ø	77.74m	0.25%

PROPOSED SANITARY SEWER

PROPOSED SANITARY SEWER PIPE TABLE					
NAME	FROM	TO	SIZE	LENGTH	SLOPE
SAN PIPE 7	EX. SAN SEWER	SAN MH 7	200 mm Ø	101.92m	0.40%

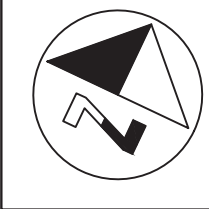
ORCHARD DRIVE



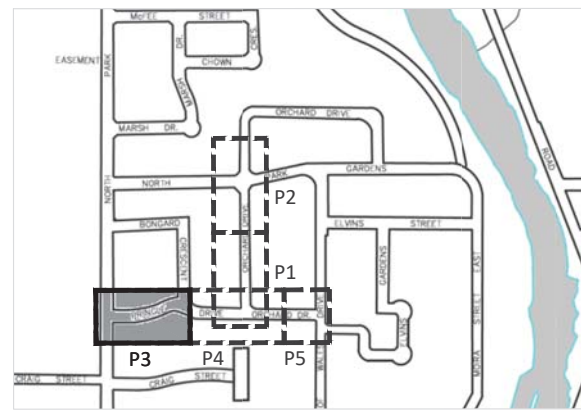
ISSUED FOR PUBLIC CONSULTATION

NORTH PARK STREET

BONGARD CRESCENT

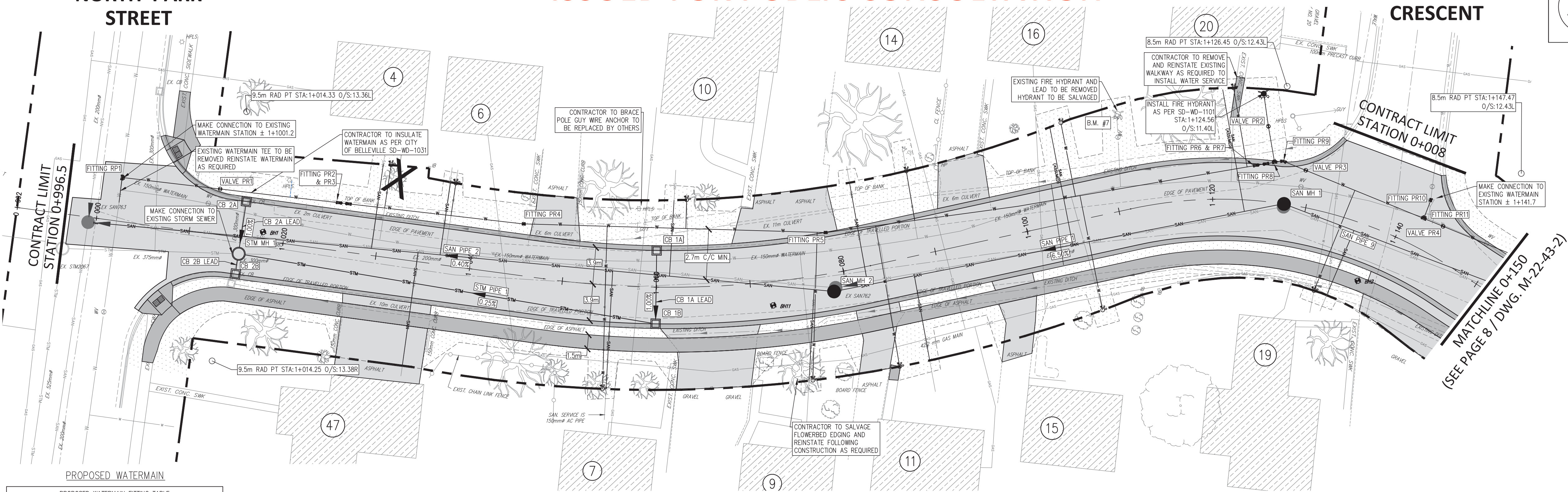


KEY PLAN



GENERAL NOTES:

- UNLESS OTHERWISE NOTED ALL EXISTING SANITARY SEWER STRUCTURES AND PIPES ARE TO BE REMOVED WITHIN THE CONTRACT LIMITS.
- UNLESS OTHERWISE NOTED ALL EXISTING STORM SEWER STRUCTURES AND PIPES ARE TO BE REMOVED WITHIN THE CONTRACT LIMITS.
- UNLESS OTHERWISE NOTED ALL EXISTING ENTRANCE CULVERTS AND ASSOCIATED HEADWALLS ARE TO BE REMOVED WITHIN THE CONTRACT LIMITS.
- WHERE CONCRETE ENTRANCE CURBS OR PRIVATE WALKWAYS INTERFERE WITH PROPOSED WORK THEY ARE TO BE REMOVED AS REQUIRED AND REINSTATED TO MATCH TO PROPOSED CONDITIONS.
- WHERE NEWLY CONSTRUCTED WATERMANS PASS UNDER SEWERS THERE SHALL BE:
 - A MINIMUM OF 0.5m OF VERTICAL SEPARATION BETWEEN THE INVERT OF THE SEWER AND THE CROWN OF THE WATERMAN.
 - A FULL LENGTH OF WATER PIPE SHALL BE CENTRED AT THE POINT OF CROSSING SO THAT THE JOINTS WILL BE EQUIDISTANT AND AS FAR AS POSSIBLE FROM THE SEWER.
- NOT ALL EXISTING SANITARY SERVICES HAVE BEEN INDICATED ON THE CONTRACT DRAWINGS AND THOSE THAT HAVE BEEN SHOWN ARE APPROXIMATE ONLY. THE CONTRACTOR SHALL BE REQUIRED TO LOCATE AND REPLACE ALL SANITARY SERVICES WITHIN THE CONTRACT LIMITS. THE CONTRACTOR SHALL BE COMPENSATED AT THE CONTRACT RATES FOR THIS WORK.
- ALL SIDEWALK SHALL BE AS PER OPSD 310.010/310.020 ALL SIDEWALK CURB RAMP SHALL BE AS PER OPSD 310.033 AND INSTALLED WITH TACTILE PLATES AS PER OPSD 310.039.

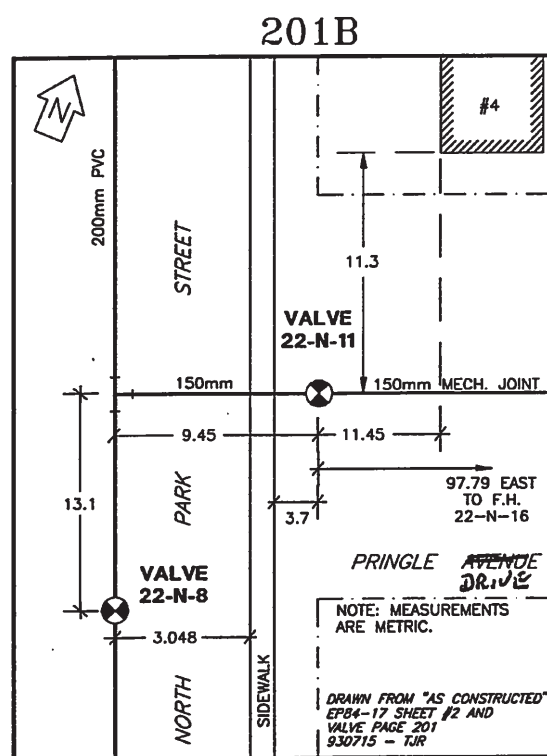


PROPOSED WATERMAIN FITTING TABLE		
NAME	DESCRIPTION	STATION / OFFSET
FITTING RP1	200x200mm TEE	1+002.16 / -4.66
FITTING PR2	200mm 45° BEND	1+025.17 / -5.08
FITTING PR3	200mm 45° BEND	1+026.58 / -5.11
FITTING PR4	200mm 11.25° BEND	1+045.13 / -5.49
FITTING PR5	200mm 11.25° BEND	1+078.86 / -4.37
FITTING PR6	200mm 45° BEND	1+124.20 / -3.69
FITTING PR7	200mm 45° BEND	1+125.50 / -4.05
FITTING PR8	200x150mm TEE	1+126.15 / -4.25
FITTING PR9	200mm 45° BEND	1+126.99 / -4.53
FITTING PR10	200mm 11.25° BEND	1+141.68 / -5.15
FITTING PR11	200x200mm TEE	1+141.86 / -3.07
PROPOSED WATERMAIN VALVE TABLE		
NAME	DESCRIPTION	STATION / OFFSET
VALVE PR1	200mm GATE VALVE	1+012.65 / -4.84
VALVE PR2	150mm GATE VALVE	1+125.22 / -7.98
VALVE PR3	200mm GATE VALVE	1+129.28 / -3.91
VALVE PR4	200mm GATE VALVE	1+143.92 / -3.29

PROPOSED STORM SEWER					
PROPOSED STORM SEWER STRUCTURE TABLE					
NAME	DESCRIPTION	STATION / OFFSET	T/G ELEV	INV ELEV	PIPE SIZES
CB 2B	CATCH BASIN C/W FRAME AND GRATE AS PER OPSD 705.010/400.020	1+015.46 / 3.90	97.561	N INV: 96.644	300mm Ø
STM MH 1	MAINTENANCE HOLE C/W FRAME AND TYPE B OPEN COVER AS PER OPSD 701.010/401.010 BENCHING AS PER OPSD 701.021	1+015.52 / 1.72	97.604	E INV: 96.557 S INV: 96.632 N INV: 96.632	375mm Ø 300mm Ø 300mm Ø
CB 2A	CATCH BASIN C/W FRAME AND GRATE AS PER OPSD 705.010/400.020	1+015.59 / -3.89	97.560	S INV: 96.679	300mm Ø
CB 1A	CATCH BASIN C/W FRAME AND GRATE AS PER OPSD 705.010/400.020	1+060.00 / -3.90	97.782	SE INV: 96.817	300mm Ø
CB 1B	CATCH BASIN C/W FRAME AND GRATE AS PER OPSD 705.010/400.020	1+060.00 / 3.90	97.782	NW INV: 96.747 W INV: 96.667	300mm Ø 375mm Ø
PROPOSED STORM SEWER PIPE TABLE					
NAME	FROM	TO	SIZE	LENGTH	SLOPE
CB 1A LEAD	CB 1A	CB 1B	300 mm Ø	7.05m	1.00%
CB 2A LEAD	CB 2A	STM MH 1	300 mm Ø	4.64m	1.00%
CB 2B LEAD	CB 2B	STM MH 1	300 mm Ø	1.21m	1.00%
STM PIPE 1	CB 1B	STM MH 1	375 mm Ø	43.96m	0.25%

PROPOSED SANITARY SEWER					
PROPOSED SANITARY SEWER STRUCTURE TABLE					
NAME	DESCRIPTION	STATION / OFFSET	T/G ELEV	INV ELEV	PIPE SIZES
SAN MH 1	MAINTENANCE HOLE C/W FRAME AND TYPE A CLOSED COVER AS PER OPSD 701.010/401.010	1+127.65 / 0.00	101.319	SW INV: 98.672 E INV: 98.705	200mm Ø 200mm Ø
SAN MH 2	MAINTENANCE HOLE C/W FRAME AND TYPE A CLOSED COVER AS PER OPSD 701.010/401.010	1+078.66 / 1.95	98.226	W INV: 95.541 NE INV: 95.582	200mm Ø 200mm Ø
PROPOSED SANITARY SEWER PIPE TABLE					
NAME	FROM	TO	SIZE	LENGTH	SLOPE
SAN PIPE 1	SAN MH 2	SAN MH 1	200 mm Ø	47.54m	6.50%
SAN PIPE 2	EX. SANITARY	SAN MH 2	200 mm Ø	78.43m	0.40%
SAN PIPE 9	SAN MH 1	SAN MH 8	200 mm Ø	47.88m	0.70%

PRINGLE DRIVE



B.M. #7
TOP NUT OF EXISTING FIRE HYDRANT LOCATED IN FRONT OF CIVIC #20 HAS AN ELEVATION OF 101.775

NO.	REVISIONS	MM/DD/YY	INITIAL
4	ISSUED FOR WATERMAIN APPROVAL	02/23/21	CEH
3	ISSUED FOR C/E APPROVAL	10/07/20	CEH
2	ISSUED FOR REVIEW	05/21/20	CEH
1	ISSUED FOR REVIEW	03/30/20	CEH

NOTES:

- DIMENSIONS ARE IN METRES UNLESS OTHERWISE STATED.
- REFER TO DRAWING No. 10 FOR LEGEND.
- THIS DRAWING IS TO BE READ AND UNDERSTOOD IN CONJUNCTION WITH ALL OTHER PLANS AND DOCUMENTS APPLICABLE TO THIS PROJECT.

CAUTION:

THE LOCATION OF UTILITIES IS APPROXIMATE ONLY, AND THE EXACT LOCATION SHOULD BE DETERMINED BY CONSULTING THE MUNICIPAL AUTHORITIES AND UTILITY COMPANIES CONCERNED. THE CONTRACTOR IS RESPONSIBLE TO PROVIDE THE LOCATION AND STATUS OF UTILITIES AND SHALL BE RESPONSIBLE FOR ADEQUATE PROTECTION OF PLANT AND EQUIPMENT FROM DAMAGE.

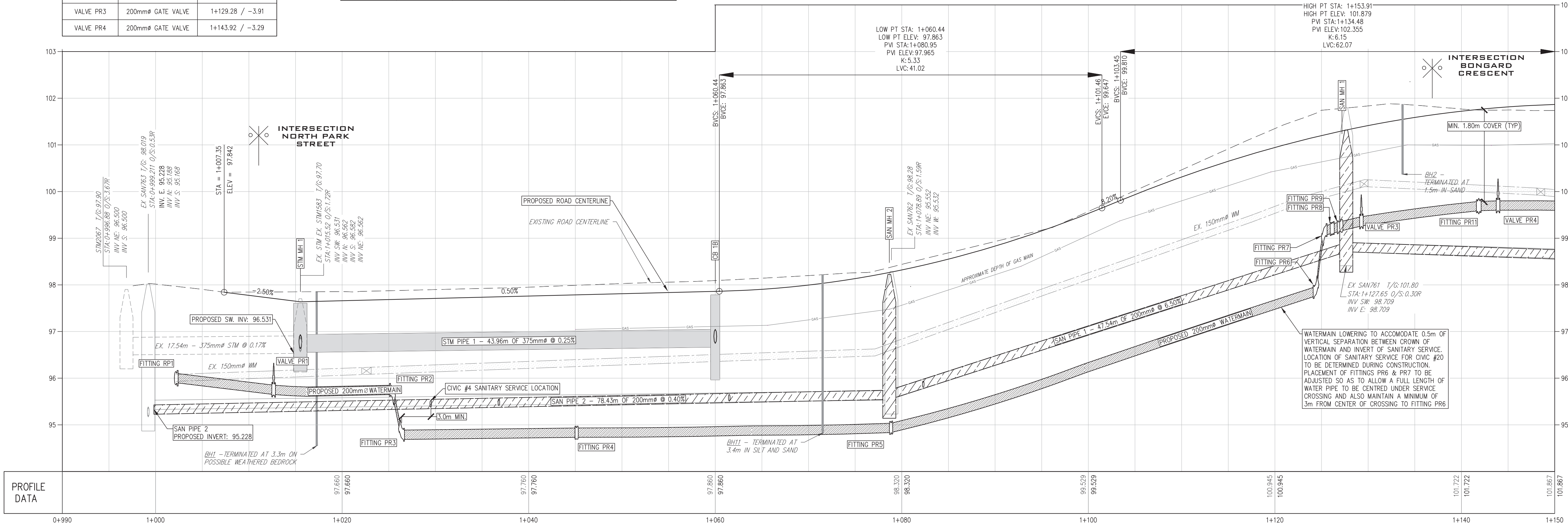
DATE	MARCH 2020	H.SCALE	1:250	V.SCALE	1:50
DESIGN	CEH	DRAWN	CEH	APPROVED	



ENGINEERING & DEVELOPMENT
SERVICES DEPARTMENT

ORCHARD DRIVE & PRINGLE DRIVE
RECONSTRUCTION

PLAN/PROFILE
STATION 0+990 TO 1+150

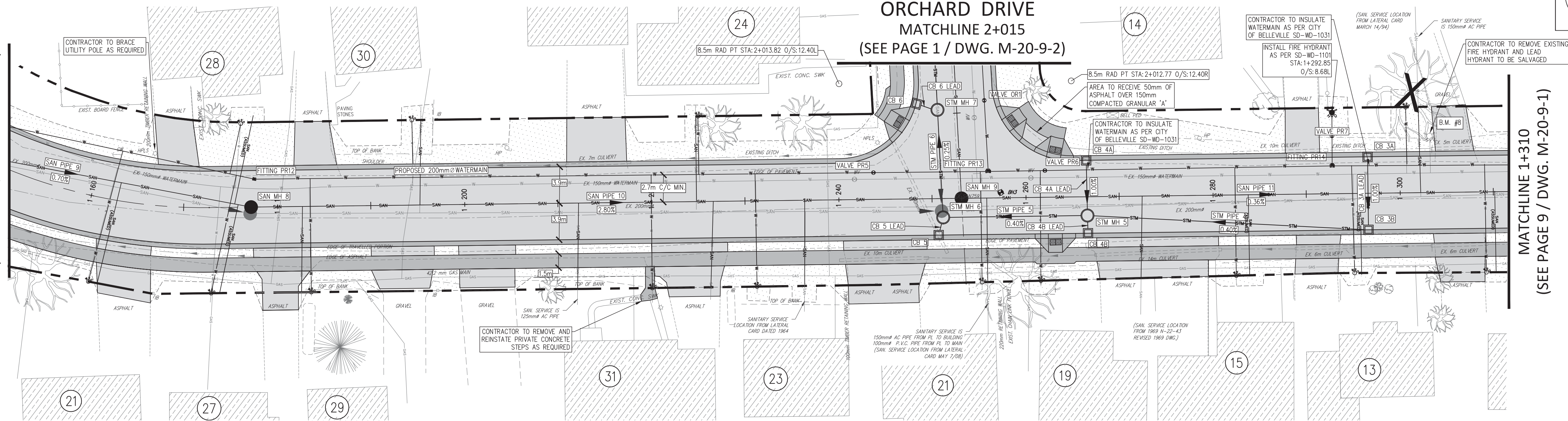


ISSUED FOR PUBLIC CONSULTATION

ORCHARD DRIVE MATCHLINE 2+015 (SEE PAGE 1 / DWG. M-20-9-2)

MATCHLINE 1+150
(SEE PAGE 7 / DWG. M-22-43-1)

MATCHLINE 1+310
(SEE PAGE 9 / DWG. M-20-9-1)



PROPOSED WATERMAIN

PROPOSED WATERMAIN FITTING TABLE		
NAME	DESCRIPTION	STATION / OFFSET
FITTING PR12	200mm ϕ 11.25" BEND	1+177.59 / -2.98
FITTING PR13	200X200mm ϕ TEE	1+256.03 / -2.83
FITTING PR14	200X150mm ϕ TEE	1+292.81 / -2.97
PROPOSED WATERMAIN VALVE TABLE		
NAME	DESCRIPTION	STATION / OFFSET
VALVE PR5	200mm ϕ GATE VALVE	1+243.77 / -2.86
VALVE PR6	200mm ϕ GATE VALVE	1+262.10 / -2.86
VALVE PR7	150mm ϕ GATE VALVE	1+292.84 / -6.18

PROPOSED STORM SEWER

PROPOSED STORM SEWER STRUCTURE TABLE					
NAME	DESCRIPTION	STATION / OFFSET	T/G ELEV	INV ELEV	PIPE SIZES
CB 5	CATCH BASIN C/W FRAME AND GRATE AS PER OPSD 705.010/400.020	1+250.66 / 3.90	99.491	N INV: 98.246	300mm ϕ
STM MH 6	MAINTENANCE HOLE C/W FRAME AND TYPE B OPEN COVER AS PER OPSD 701.010/401.010 BENCHING AS PER OPSD 701.021	1+251.17 / 2.02	99.479	N INV: 98.153 E INV: 98.217 S INV: 98.236	375mm ϕ 375mm ϕ 300mm ϕ
CB 4A	CATCH BASIN C/W FRAME AND GRATE AS PER OPSD 705.010/400.020	1+266.53 / -3.89	99.584	S INV: 98.398	300mm ϕ
STM MH 5	MAINTENANCE HOLE C/W FRAME AND TYPE B OPEN COVER AS PER OPSD 701.010/401.010 BENCHING AS PER OPSD 701.021	1+266.59 / 2.00	99.622	E INV: 98.279 W INV: 98.274 N INV: 98.348 S INV: 98.355	375mm ϕ 375mm ϕ 300mm ϕ 300mm ϕ
CB 4B	CATCH BASIN C/W FRAME AND GRATE AS PER OPSD 705.010/400.020	1+266.63 / 3.90	99.584	N INV: 98.364	300mm ϕ
CB 3A	CATCH BASIN C/W FRAME AND GRATE AS PER OPSD 705.010/400.020	1+296.61 / -3.90	99.828	S INV: 98.542	300mm ϕ
CB 3B	CATCH BASIN C/W FRAME AND GRATE AS PER OPSD 705.010/400.020	1+296.61 / 3.90	99.828	N INV: 98.471 W INV: 98.395	300mm ϕ 375mm ϕ
STM MH 7	MAINTENANCE HOLE C/W FRAME AND TYPE B OPEN COVER AS PER OPSD 701.010/401.010 BENCHING AS PER OPSD 701.021	2+010.46 / -2.04	99.427	N INV: 98.049 S INV: 98.128 W INV: 98.207	450mm ϕ 375mm ϕ 300mm ϕ
CB 6	CATCH BASIN C/W FRAME AND GRATE AS PER OPSD 705.010/400.020	2+011.24 / -4.25	99.369	E INV: 98.225	300mm ϕ

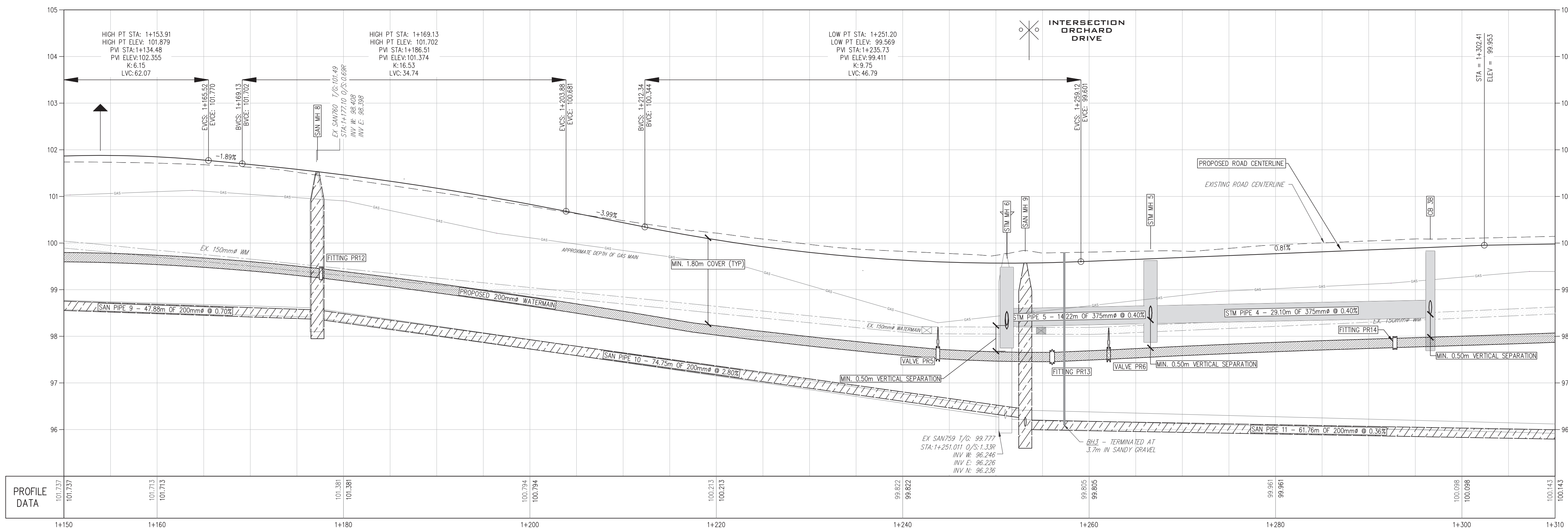
PROPOSED STORM SEWER PIPE TABLE					
NAME	FROM	TO	SIZE	LENGTH	SLOPE
CB 3A LEAD	CB 3B	CB 3A	300 mm ϕ	7.05m	1.00%
CB 4A LEAD	CB 4A	STM MH 5	300 mm ϕ	4.92m	1.00%
CB 4B LEAD	CB 4B	STM MH 5	300 mm ϕ	0.93m	1.00%
CB 5 LEAD	CB 5	STM MH 6	300 mm ϕ	0.57m	1.00%
CB 6 LEAD	CB 6	STM MH 7	300 mm ϕ	1.38m	1.00%
STM PIPE 4	CB 3B	STM MH 5	375 mm ϕ	29.10m	0.40%
STM PIPE 5	STM MH 5	STM MH 6	375 mm ϕ	14.22m	0.40%
STM PIPE 6	STM MH 6	STM MH 7	375 mm ϕ	10.31m	0.25%

PROPOSED SANITARY SEWER

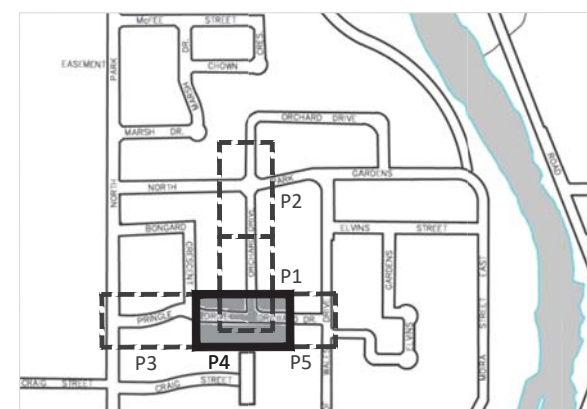
PROPOSED SANITARY SEWER STRUCTURE TABLE					
NAME	DESCRIPTION	STATION / OFFSET	T/G ELEV	INV ELEV	PIPE SIZES
SAN MH 8	MAINTENANCE HOLE C/W FRAME AND TYPE A CLOSED COVER AS PER OPSD 701.010/401.010	1+177.21 / 0.00	101.530	W INV: 98.370 E INV: 98.348	200mm ϕ 200mm ϕ
SAN MH 9	MAINTENANCE HOLE C/W FRAME AND TYPE A CLOSED COVER AS PER OPSD 701.010/401.010	1+253.15 / 0.00	99.571	N INV: 96.066 E INV: 95.999 W INV: 96.255	200mm ϕ 200mm ϕ 200mm ϕ

PROPOSED SANITARY SEWER PIPE TABLE					
NAME	FROM	TO	SIZE	LENGTH	SLOPE
SAN PIPE 9	SAN MH 1	SAN MH 8	200 mm ϕ	47.88m	0.70%
SAN PIPE 10	SAN MH 8	SAN MH 9	200 mm ϕ	74.75m	2.80%
SAN PIPE 11	SAN MH 9	SAN MH 10	200 mm ϕ	61.76m	0.36%

PRINGLE DRIVE | ORCHARD DRIVE



KEY PLAN



GENERAL NOTES:

- UNLESS OTHERWISE NOTED ALL EXISTING SANITARY SEWER STRUCTURES AND PIPES ARE TO BE REMOVED WITHIN THE CONTRACT LIMITS.
- UNLESS OTHERWISE NOTED ALL EXISTING STORM SEWER STRUCTURES AND PIPES ARE TO BE REMOVED WITHIN THE CONTRACT LIMITS.
- UNLESS OTHERWISE NOTED ALL EXISTING ENTRANCE CULVERTS AND ASSOCIATED HEADWALLS ARE TO BE REMOVED WITHIN THE CONTRACT LIMITS.
- WHERE CONCRETE ENTRANCE CURBS OR PRIVATE WALKWAYS INTERFERE WITH PROPOSED WORK THEY ARE TO BE REMOVED AS REQUIRED AND REINSTATED TO MATCH TO PROPOSED CONDITIONS.
- WHERE NEWLY CONSTRUCTED WATERMAINS PASS UNDER SEWERS THERE SHALL BE:
 - A MINIMUM OF 0.5m OF VERTICAL SEPARATION BETWEEN THE INVERT OF THE SEWER AND THE CROWN OF THE WATERMAIN.
 - A FULL LENGTH OF WATER PIPE SHALL BE CENTRED AT THE POINT OF CROSSING SO THAT THE JOINTS WILL BE EQUIDISTANT AND AS FAR AS POSSIBLE FROM THE SEWER.
- NOT ALL EXISTING SANITARY SERVICES HAVE BEEN INDICATED ON THE CONTRACT DRAWINGS AND THOSE THAT HAVE BEEN SHOWN ARE APPROXIMATE ONLY. THE CONTRACTOR SHALL BE REQUIRED TO LOCATE AND REPLACE ALL SANITARY SERVICES WITHIN THE CONTRACT LIMITS. THE CONTRACTOR SHALL BE COMPENSATED AT THE CONTRACT RATES FOR THIS WORK.
- ALL SIDEWALK SHALL BE AS PER OPSD 310.010/310.020 ALL SIDEWALK CURB RAMP SHALL BE AS PER OPSD 310.033 AND INSTALLED WITH TACTILE PLATES AS PER OPSD 310.039

B.M. #8

TOP NUT OF EXISTING FIRE HYDRANT LOCATED IN FRONT OF CIVIC #12 HAS AN ELEVATION OF 100.960

NO.	REVISIONS	MM/DD/YY	INITIAL
4	ISSUED FOR WATERMAIN APPROVAL	02/23/21	CEH
3	ISSUED FOR C/E APPROVAL	10/07/20	CEH
2	ISSUED FOR REVIEW	05/21/20	CEH
1	ISSUED FOR REVIEW	03/30/20	CEH

NOTES:

- DIMENSIONS ARE IN METRES UNLESS OTHERWISE STATED.
- REFER TO DRAWING No. 10 FOR LEGEND.
- THIS DRAWING IS TO BE READ AND UNDERSTOOD IN CONJUNCTION WITH ALL OTHER PLANS AND DOCUMENTS APPLICABLE TO THIS PROJECT.

CAUTION:

THE LOCATION OF UTILITIES IS APPROXIMATE ONLY, AND THE EXACT LOCATION SHOULD BE DETERMINED BY CONSULTING THE MUNICIPAL AUTHORITIES AND UTILITY COMPANIES CONCERNED. THE CONTRACTOR IS RESPONSIBLE TO PROVIDE THE LOCATION AND STATUS OF UTILITIES AND SHALL BE RESPONSIBLE FOR ADEQUATE PROTECTION OF PLANT AND EQUIPMENT FROM DAMAGE.

DATE	MARCH 2020	H.SCALE	1:250	V.SCALE	1:50
DESIGN	CEH	DRAWN	CEH	APPROVED	

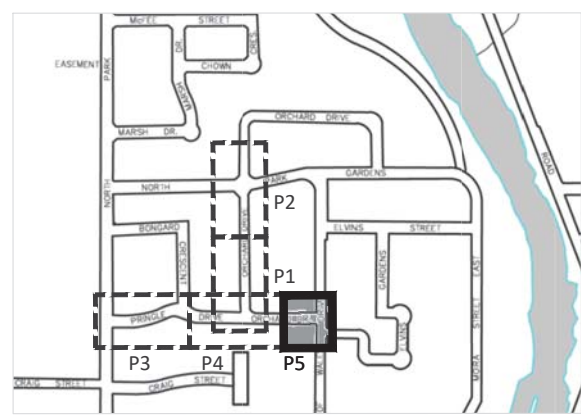
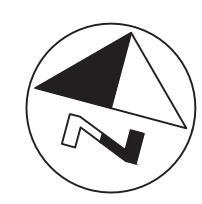


CITY OF BELLEVILLE
ENGINEERING & DEVELOPMENT
SERVICES DEPARTMENT

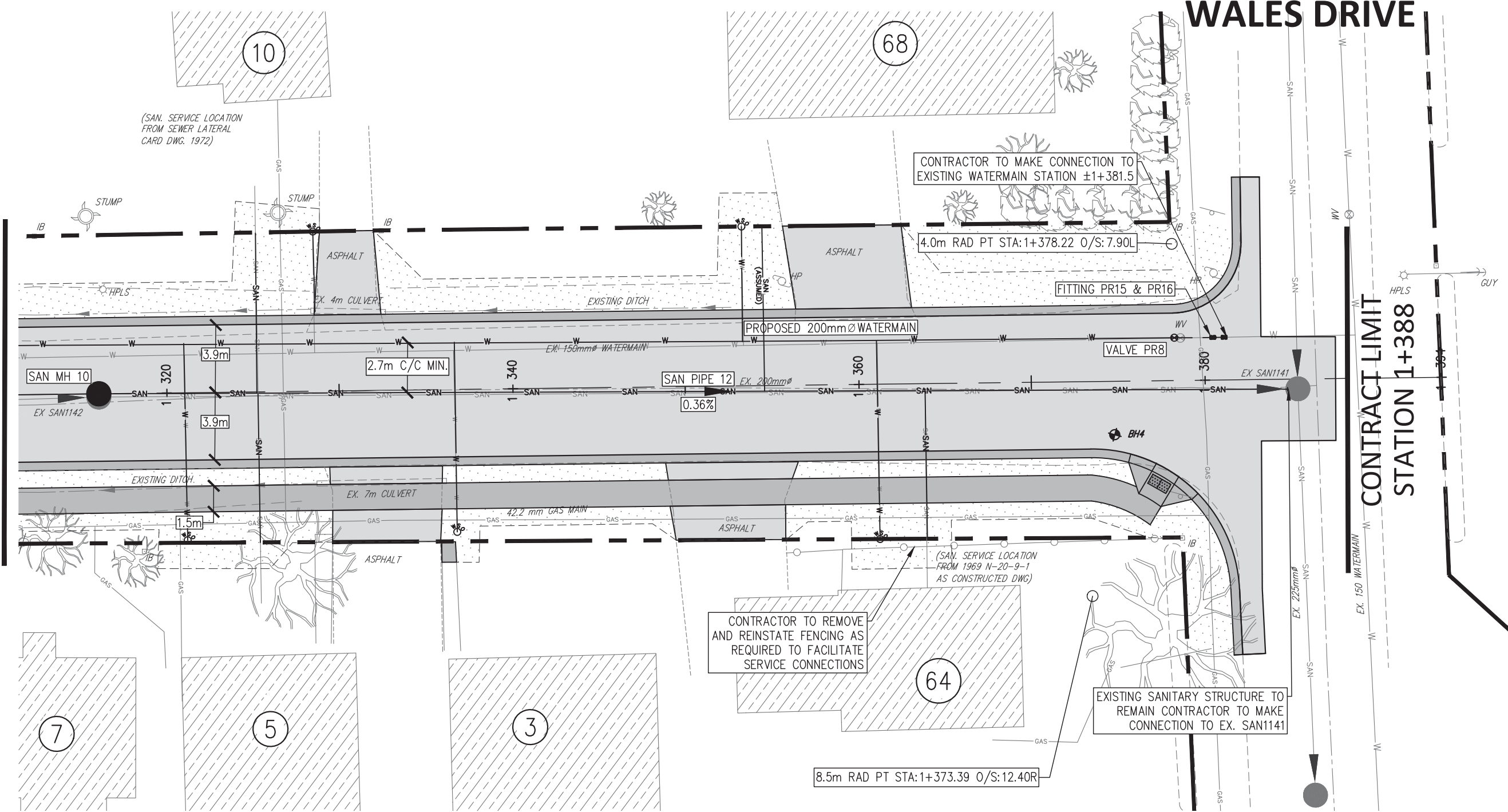
ORCHARD DRIVE & PRINGLE DRIVE RECONSTRUCTION

PLAN/PROFILE
STATION 1+150 TO 1+310

DRAWING No. M-22-43-2 SHEET No. 4 OF 6



(SEE PAGE 8 / DWG. M-22-43-2)
MATCHLINE 0+310



PROPOSED WATERMAIN

PROPOSED WATERMAIN FITTING TABLE			
NAME	DESCRIPTION	STATION / OFFSET	
FITTING PR15	150mmØ 22.5° BEND	1+380.47 / -2.46	
FITTING PR16	150mmØ 22.5° BEND	1+381.12 / -2.47	
PROPOSED WATERMAIN VALVE TABLE			
NAME	DESCRIPTION	STATION / OFFSET	
VALVE PR8	200mmØ GATE VALVE	1+378.30 / -2.47	

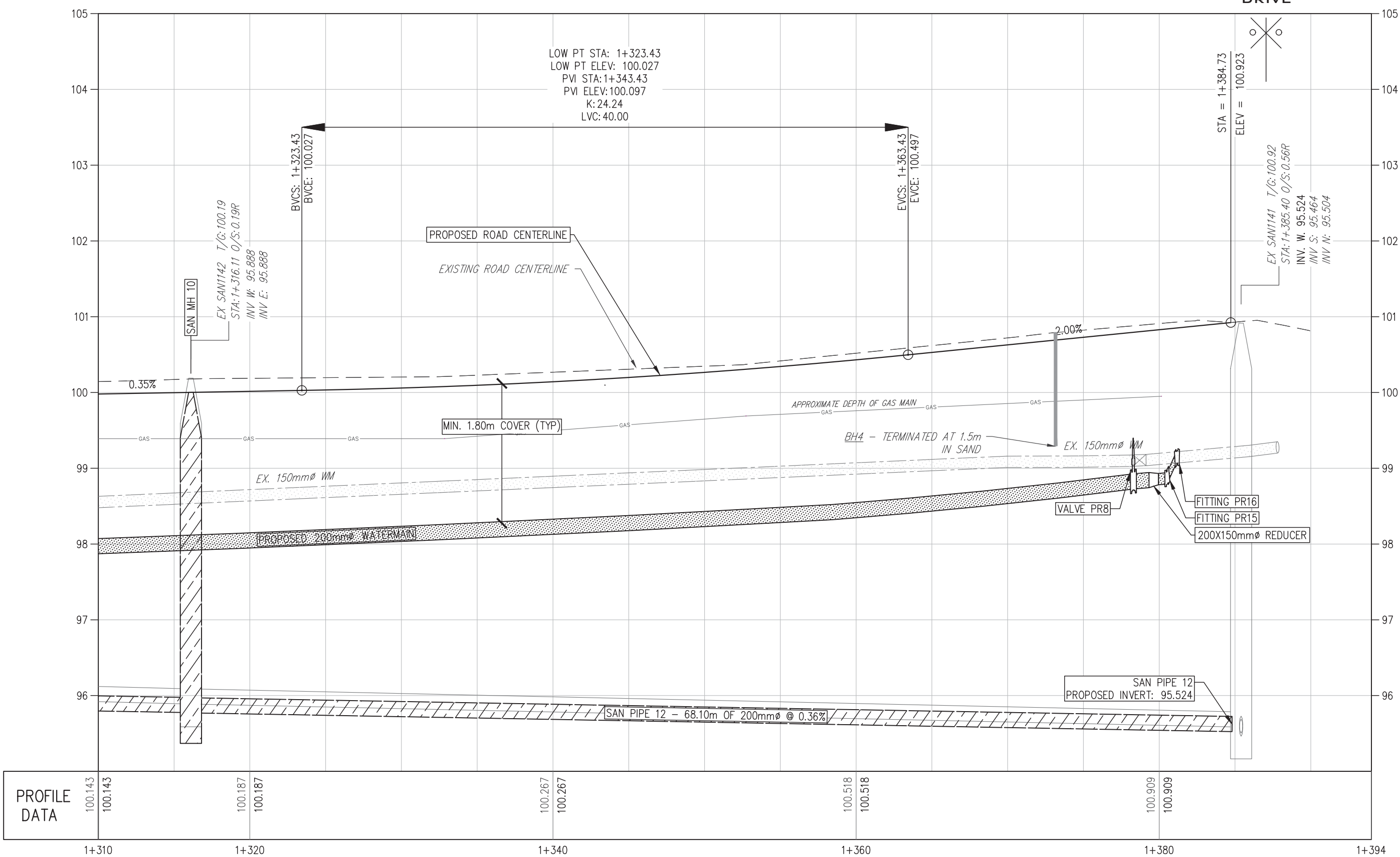
PROPOSED SANITARY SEWER

PROPOSED SANITARY SEWER STRUCTURE TABLE						
NAME	DESCRIPTION	STATION / OFFSET	T/G ELEV	INV ELEV	PIPE SIZES	
SAN MH 10	MAINTENANCE HOLE C/W FRAME AND TYPE A CLOSED COVER AS PER OPSD 701.010/401.010	1+316.11 / 0.00	100.001	W INV: 95.776 E INV: 95.769	200mmØ 200mmØ	

PROPOSED SANITARY SEWER PIPE TABLE					
NAME	FROM	TO	SIZE	LENGTH	SLOPE
SAN PIPE 12	SAN MH 10	EX SAN1141	200 mmØ	68.10m	0.36%

ORCHARD DRIVE

INTERSECTION
PRINGLE DRIVE



GENERAL NOTES:

- UNLESS OTHERWISE NOTED ALL EXISTING SANITARY SEWER STRUCTURES AND PIPES ARE TO BE REMOVED WITHIN THE CONTRACT LIMITS.
- UNLESS OTHERWISE NOTED ALL EXISTING STORM SEWER STRUCTURES AND PIPES ARE TO BE REMOVED WITHIN THE CONTRACT LIMITS.
- UNLESS OTHERWISE NOTED ALL EXISTING ENTRANCE CULVERTS AND ASSOCIATED HEADWALLS ARE TO BE REMOVED WITHIN THE CONTRACT LIMITS.
- WHERE CONCRETE ENTRANCE CURBS OR PRIVATE WALKWAYS INTERFERE WITH PROPOSED WORK THEY ARE TO BE REMOVED AS REQUIRED AND REINSTATED TO MATCH TO PROPOSED CONDITIONS.
- WHERE NEWLY CONSTRUCTED WATERMAINS PASS UNDER SEWERS THERE SHALL BE:
 - A MINIMUM OF 0.5m OF VERTICAL SEPARATION BETWEEN THE INVERT OF THE SEWER AND THE CROWN OF THE WATERMAIN.
 - A FULL LENGTH OF WATER PIPE SHALL BE CENTRED AT THE POINT OF CROSSING SO THAT THE JOINTS WILL BE EQUIDISTANT AND AS FAR AS POSSIBLE FROM THE SEWER.
- NOT ALL EXISTING SANITARY SERVICES HAVE BEEN INDICATED ON THE CONTRACT DRAWINGS AND THOSE THAT HAVE BEEN SHOWN ARE APPROXIMATE ONLY. THE CONTRACTOR SHALL BE REQUIRED TO LOCATE AND REPLACE ALL SANITARY SERVICES WITHIN THE CONTRACT LIMITS. THE CONTRACTOR SHALL BE COMPENSATED AT THE CONTRACT RATES FOR THIS WORK.
- ALL SIDEWALK SHALL BE AS PER OPSD 310.010/310.020 ALL SIDEWALK CURB RAMP SHALL BE AS PER OPSD 310.033 AND INSTALLED WITH TACTILE PLATES AS PER OPSD 310.039

B.M. #8

TOP NUT OF EXISTING FIRE HYDRANT LOCATED IN FRONT OF CIVIC #12 HAS AN ELEVATION OF 100.980

NO.	REVISIONS	MM/DD/YY	INITIAL
4	ISSUED FOR WATERMAIN APPROVAL	02/23/21	CEH
3	ISSUED FOR C/OE APPROVAL	10/07/20	CEH
2	ISSUED FOR REVIEW	05/21/20	CEH
1	ISSUED FOR REVIEW	03/30/20	CEH

NOTES:

- DIMENSIONS ARE IN METRES UNLESS OTHERWISE STATED.
- REFER TO DRAWING No. 10 FOR LEGEND.
- THIS DRAWING IS TO BE READ AND UNDERSTOOD IN CONJUNCTION WITH ALL OTHER PLANS AND DOCUMENTS APPLICABLE TO THIS PROJECT.

CAUTION:

THE LOCATION OF UTILITIES IS APPROXIMATE ONLY, AND THE EXACT LOCATION SHOULD BE DETERMINED BY CONSULTING THE MUNICIPAL AUTHORITIES AND UTILITY COMPANIES CONCERNED. THE CONTRACTOR IS RESPONSIBLE TO PROVIDE THE LOCATION AND STATUS OF UTILITIES AND SHALL BE RESPONSIBLE FOR ADEQUATE PROTECTION OF PLANT AND EQUIPMENT FROM DAMAGE.

DATE	MARCH 2020	H.SCALE	1:250	V.SCALE	1:50
DESIGN	CEH	DRAWN	CEH	APPROVED	



ENGINEERING & DEVELOPMENT
SERVICES DEPARTMENT

ORCHARD DRIVE & PRINGLE DRIVE
RECONSTRUCTION

PLAN/PROFILE
STATION 1+310 to 1+388

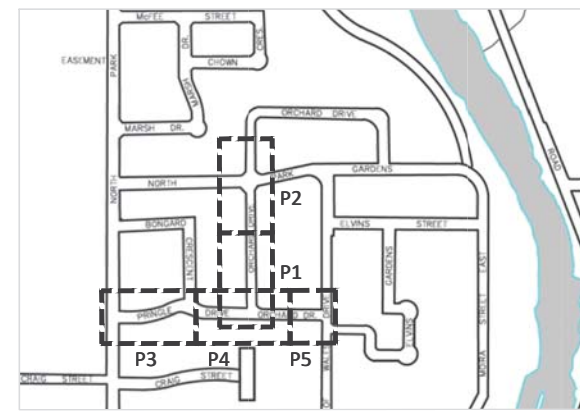
DRAWING No. M-20-9-1

SHEET No. 9 OF 10

ISSUED FOR PUBLIC CONSULTATION



KEY PLAN

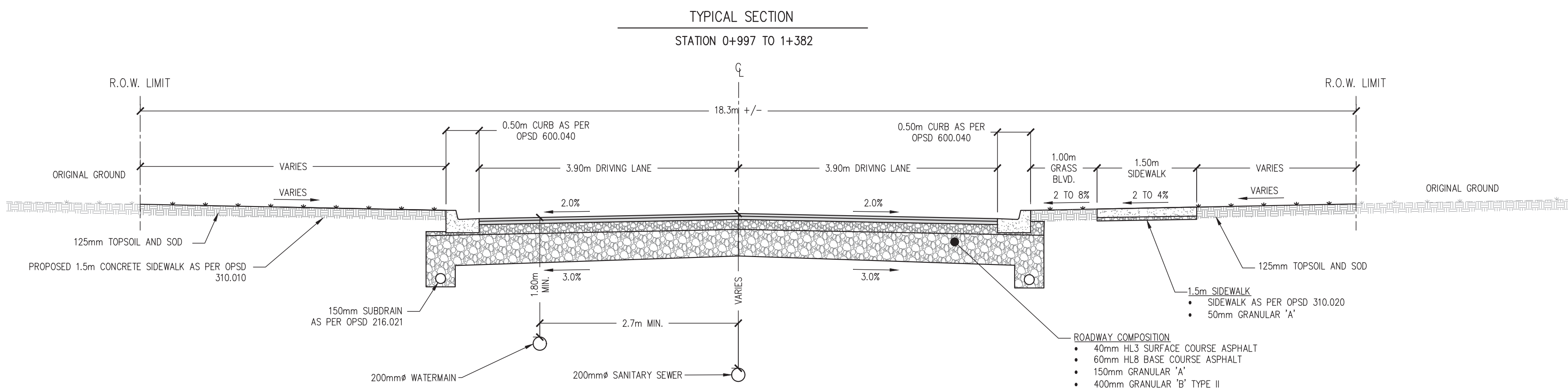
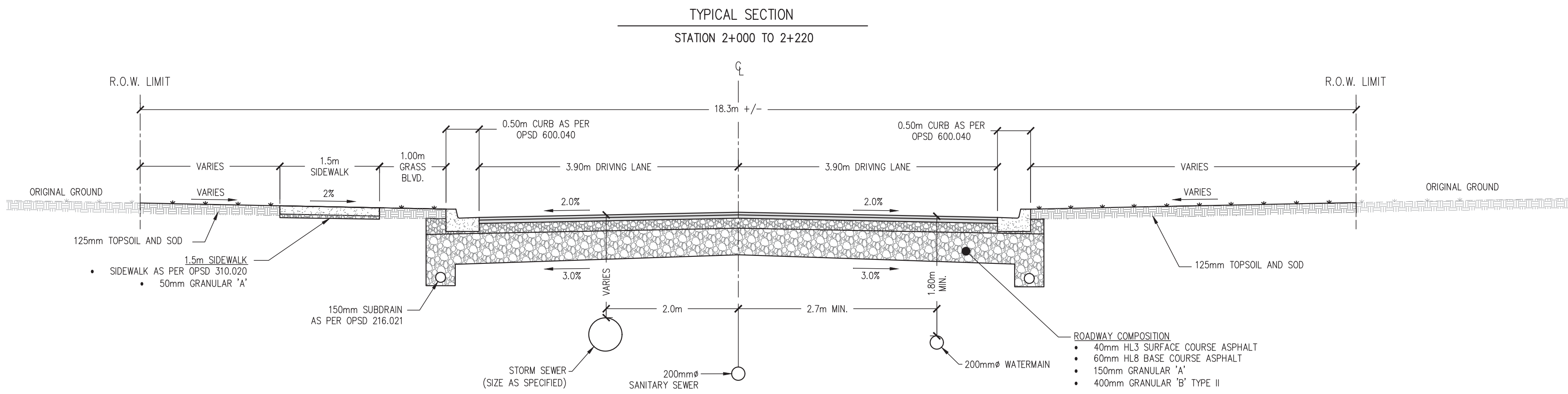


GENERAL NOTES:

- UNLESS OTHERWISE NOTED ALL EXISTING SANITARY SEWER STRUCTURES AND PIPES ARE TO BE REMOVED WITHIN THE CONTRACT LIMITS.
- UNLESS OTHERWISE NOTED ALL EXISTING STORM SEWER STRUCTURES AND PIPES ARE TO BE REMOVED WITHIN THE CONTRACT LIMITS.
- UNLESS OTHERWISE NOTED ALL EXISTING ENTRANCE CULVERTS AND ASSOCIATED HEADWALLS ARE TO BE REMOVED WITHIN THE CONTRACT LIMITS.
- WHERE CONCRETE ENTRANCE CURBS OR PRIVATE WALKWAYS INTERFERE WITH PROPOSED WORK THEY ARE TO BE REMOVED AS REQUIRED AND REINSTATED TO MATCH TO PROPOSED CONDITIONS.
- WHERE NEWLY CONSTRUCTED WATERMAINS PASS UNDER SEWERS THERE SHALL BE:
 - A MINIMUM OF 0.5m OF VERTICAL SEPARATION BETWEEN THE INVERT OF THE SEWER AND THE CROWN OF THE WATERMAIN.
 - A FULL LENGTH OF WATER PIPE SHALL BE CENTRED AT THE POINT OF CROSSING SO THAT THE JOINTS WILL BE EQUIDISTANT AND AS FAR AS POSSIBLE FROM THE SEWER.
- NOT ALL EXISTING SANITARY SERVICES HAVE BEEN INDICATED ON THE CONTRACT DRAWINGS AND THOSE THAT HAVE BEEN SHOWN ARE APPROXIMATE ONLY. THE CONTRACTOR SHALL BE REQUIRED TO LOCATE AND REPLACE ALL SANITARY SERVICES WITHIN THE CONTRACT LIMITS. THE CONTRACTOR SHALL BE COMPENSATED AT THE CONTRACT RATES FOR THIS WORK.
- ALL SIDEWALK SHALL BE AS PER OPSD 310.010/310.020 ALL SIDEWALK CURB RAMP SHALL BE AS PER OPSD 310.033 AND INSTALLED WITH TACTILE PLATES AS PER OPSD 310.039

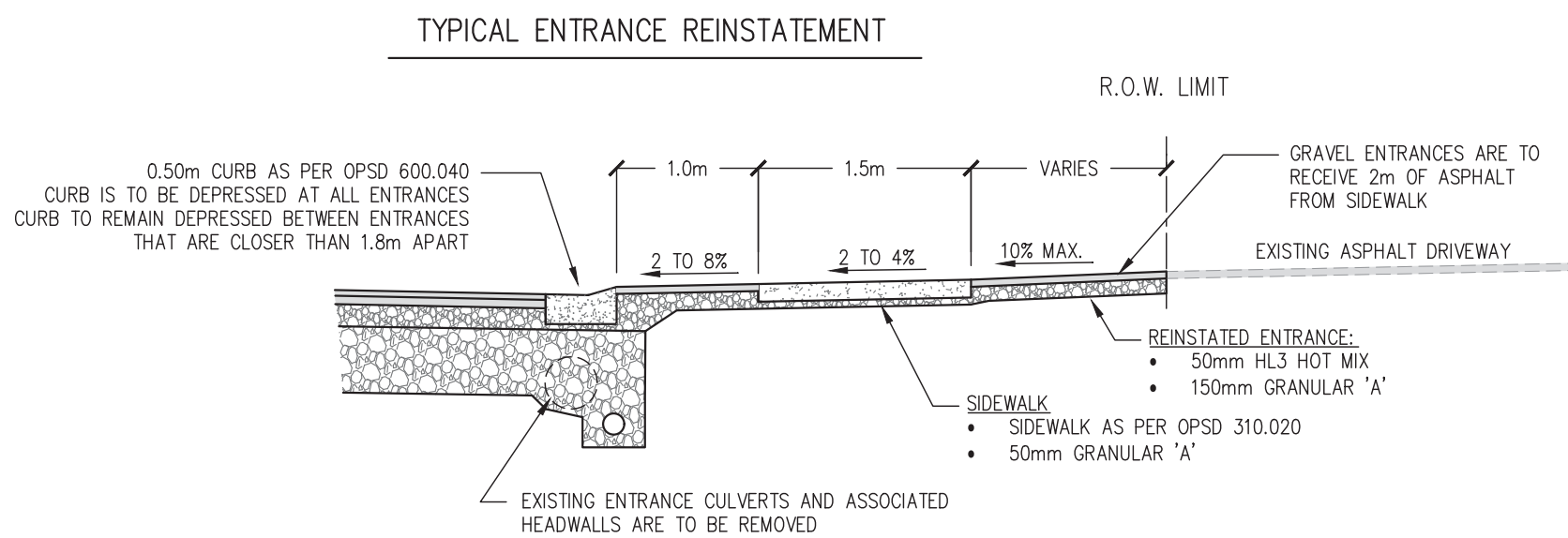
LEGEND

EXISTING	DESCRIPTION	PROPOSED
	APPROX. R.O.W. LIMIT	
	WATERMAIN	
	SANITARY SEWER	
	ASSUMED SANITARY SEWER SERVICE LOCATION	
	STORM SEWER	
	NATURAL GAS	
	BELL DUCT/CABLE	
	TRAFFIC DUCT	
	SAN. MAINT. HOLE	
	STM. MAINT. HOLE	
	CATCHBASIN MH	
	CATCHBASIN	
	DOUBLE CATCHBASIN	
	DITCH INLET CATCHBASIN	
	WATER VALVE	
	WATERMAIN REDUCER	
	FIRE HYDRANT	
	CURB STOP	
	CONIFEROUS TREE	
	DECIDUOUS TREE	
	EXISTING TREE TO BE REMOVED	
	SIGN	
	UTILITY POLE	
	GUY WIRE	
	TRAFFIC HAND HOLE	
	BORE HOLE	
	BELL MH	
	BELL PEDESTAL	
	CABLE PEDESTAL	
	GAS VALVE	
	GAS METER	
	LIGHT STANDARD	
	SURVEY BAR	
	CHAINLINK FENCE	
	BOARD FENCE	
	BOLLARD	
	125mm TOPSOIL AND SOD	
	ASPHALT SURFACE	
	CONCRETE SURFACE	
	ENTRANCE CULVERT	



NOTE:

- ALL EXISTING ENTRANCE CURBS AND PRIVATE WALKWAYS THAT INTERFERE WITH PROPOSED WORKS ARE TO BE REMOVED AS REQUIRED AND REINSTATED TO MATCH TO PROPOSED WORK.
- ALL ENTRANCES ARE TO BE REINSTATED AS PER OPSD 310.050.
- ALL SIDEWALK WITHIN AN ENTRANCE SHALL BE CONSTRUCTED AS PER OPSD 315.010.
- CURB SHALL BE DEPRESSED AT ALL ENTRANCES. WHERE THE DISTANCE IS 1.8m OR LESS THE CURB SHALL REMAIN DEPRESSED BETWEEN ENTRANCES.



NOT FOR CONSTRUCTION

NO.	REVISIONS	MM/DD/YY	INITIAL
4	ISSUED FOR WATERMAIN APPROVAL	02/23/21	CEH
3	ISSUED FOR EOE APPROVAL	10/07/20	CEH
2	ISSUED FOR REVIEW	05/21/20	CEH
1	ISSUED FOR REVIEW	03/30/20	CEH

NOTES:

- DIMENSIONS ARE IN METRES UNLESS OTHERWISE STATED.
- REFER TO DRAWING No. 10 FOR LEGEND.
- THIS DRAWING IS TO BE READ AND UNDERSTOOD IN CONJUNCTION WITH ALL OTHER PLANS AND DOCUMENTS APPLICABLE TO THIS PROJECT.

CAUTION:

THE LOCATION OF UTILITIES IS APPROXIMATE ONLY, AND THE EXACT LOCATION SHOULD BE DETERMINED BY CONSULTING THE MUNICIPAL AUTHORITIES AND UTILITY COMPANIES CONCERNED. THE CONTRACTOR IS RESPONSIBLE TO PROVIDE THE LOCATION AND STATUS OF UTILITIES AND SHALL BE RESPONSIBLE FOR ADEQUATE PROTECTION OF PLANT AND EQUIPMENT FROM DAMAGE.

DATE	MARCH 2020	H.SCALE	1:50	V.SCALE	1:50
DESIGN	CEH	DRAWN	CEH	APPROVED	



CITY OF BELLEVILLE
ENGINEERING & DEVELOPMENT
SERVICES DEPARTMENT

ORCHARD DRIVE & PRINGLE DRIVE
RECONSTRUCTION

TYPICAL SECTIONS

DRAWING No.	SHEET No.
	6 OF 6