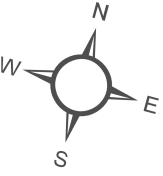







CITY OF BELLEVILLE OFFICIAL PLAN

Appendix B Wildland Fire Hazard Areas

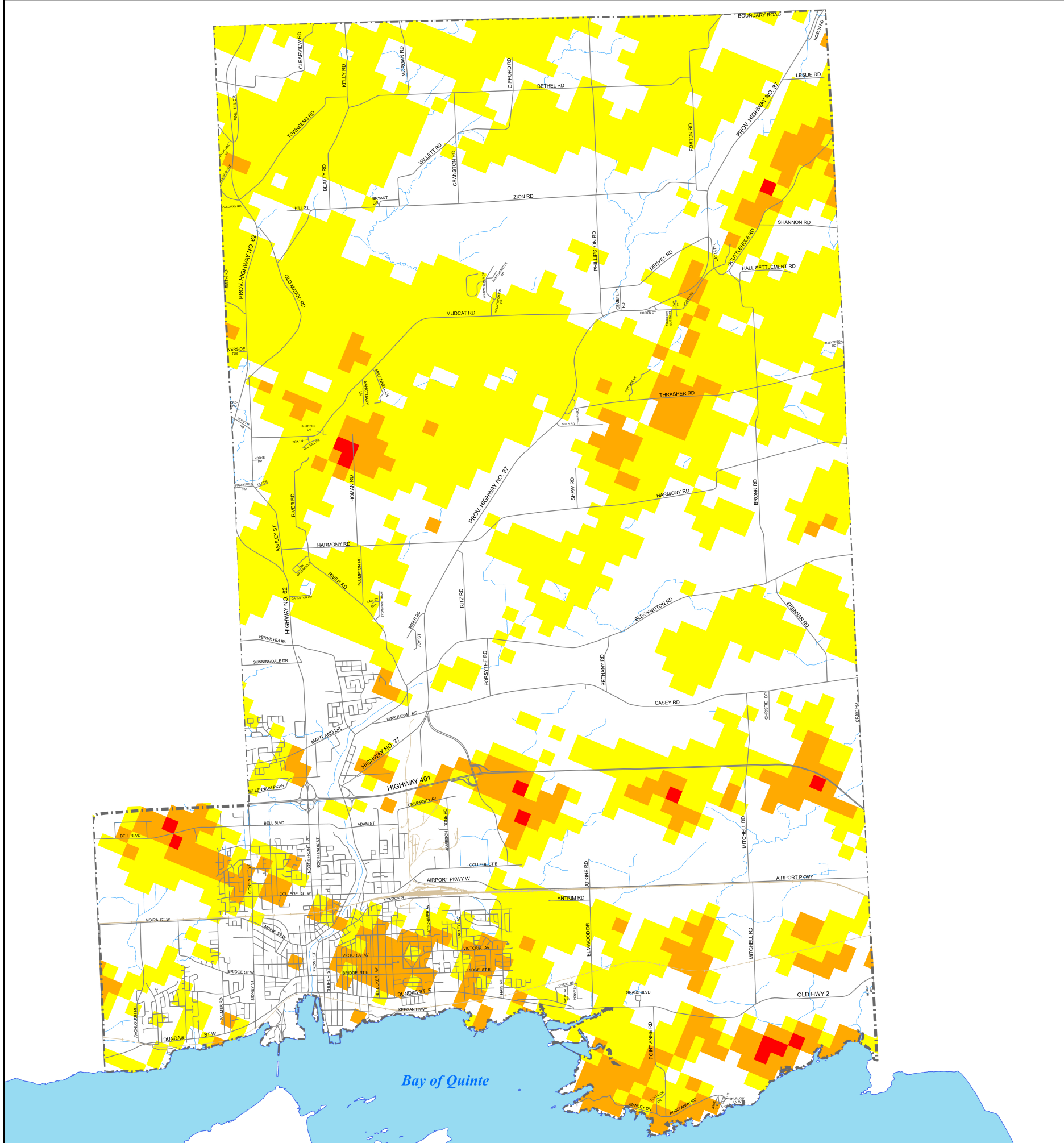


LEGEND

-  Roads
-  Railways
-  Watercourses
-  Municipal Boundary
-  Bay of Quinte

Potential Hazardous Fuel Types for Wildland Fires

-  Extreme
-  Low
-  Moderate



SCALE 1:82,500

MAP DRAWING INFORMATION:
ESRI Basemaps, City of Belleville, MNR (2019), Canvec (2018)

MAP PROJECTION: NAD 1983 UTM Zone 18N, ROTATED 15°

PROJECT: 199902

STATUS: APPROVED

DATE: 2024-09-10

