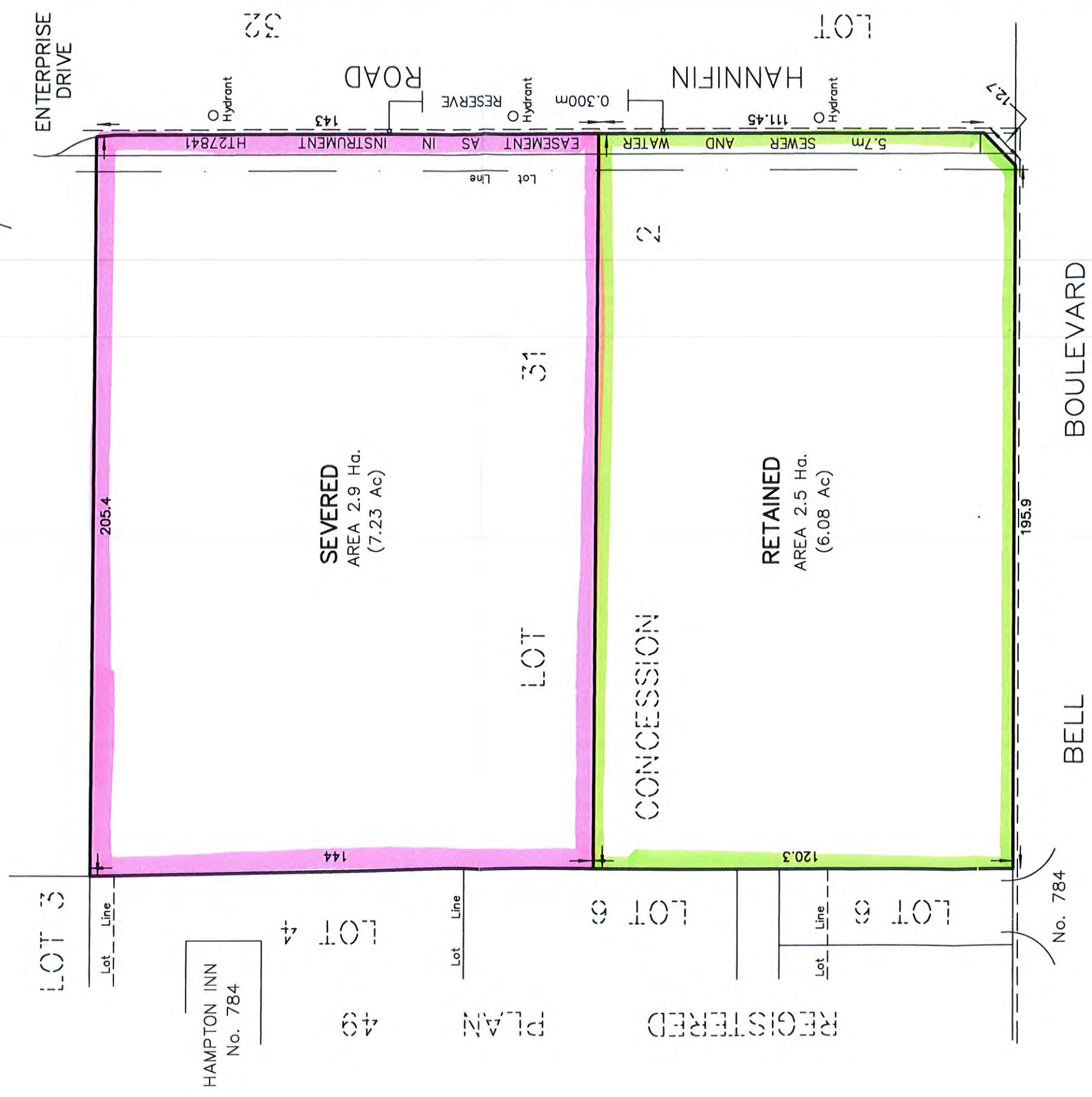
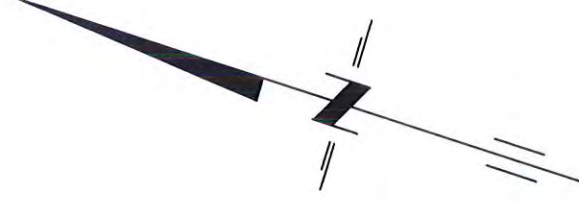


SKETCH
 PART OF LOTS 31 AND 32
 CONCESSION 2
 TOWNSHIP OF SIDNEY
 NOW IN THE CITY OF BELLEVILLE
 COUNTY OF HASTINGS
 METRIC SCALE 1 : 1250



METRIC :
 DISTANCES ON THIS PLAN ARE IN METRES
 AND CAN BE CONVERTED TO FEET BY DIVIDING BY 0.3048.

218 CHURCH STREET
 BELLEVILLE, ONTARIO

WATSON
 LAND SURVEYORS Ltd.

K8N - 3C3
 (613) 962 - 9521

JUNE 22, 2021

PROJECT N^o 13083-B-21