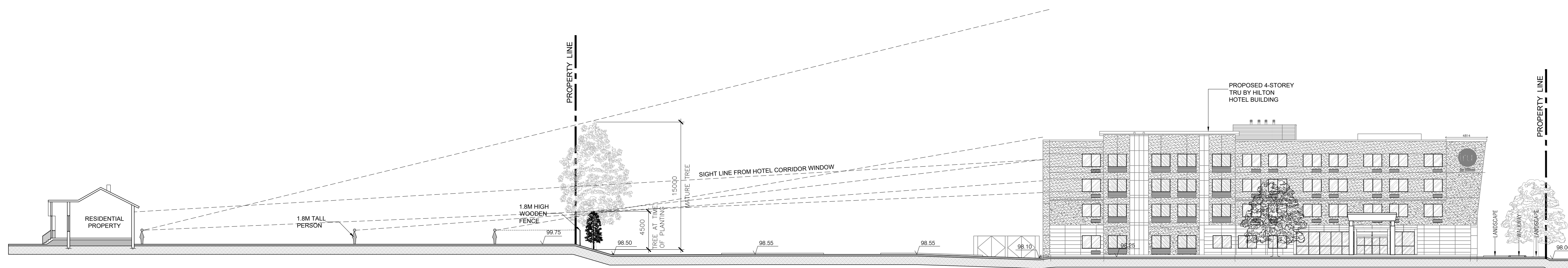




n Architecture Inc

PRINCIPAL: NITIN MALHOTRA, ARCHITECT.
9120 Leslie Street, Suite-208
Richmond Hill, Ontario, L4B 3J9
T : 4 1 6 . 3 0 3 . 4 8 2 1
E: info@narchitecture.com
www.narchitecture.com

22ND JAN. 2021
NOT FOR CONSTRUCTION
CITY COMMENTS



1 SITE SECTION
A-1.4 SCALE:1:250

No.	Date	Version	Dwn.
3	22 JAN. 2021	ISSUED FOR PAC	TT
2	16 SEPT. 2020	CITY COMMENTS	TT
1	7 FEB. 2020	ISSUED FOR ZBA / SPA	TT

This drawing is copyright property of 'n Architecture Inc'. Not to be reproduced. Contractor must verify all job dimensions, drawings, details and specifications and report any discrepancies to the architect before proceeding with work.

PROJECT:
**TRU BY HILTON
PROPOSED HOTEL
99 MILLENNIUM
PARKWAY
BELLEVILLE, ON**

DRAWING TITLE:
**SITE
SECTIONS**

DRAWN BY: SB	DATE: 2019 OCT 28
CHECKED BY: NM	SCALE: AS NOTED
PROJECT NO.:	DRAWING NO.:
19-63	A-1.4