

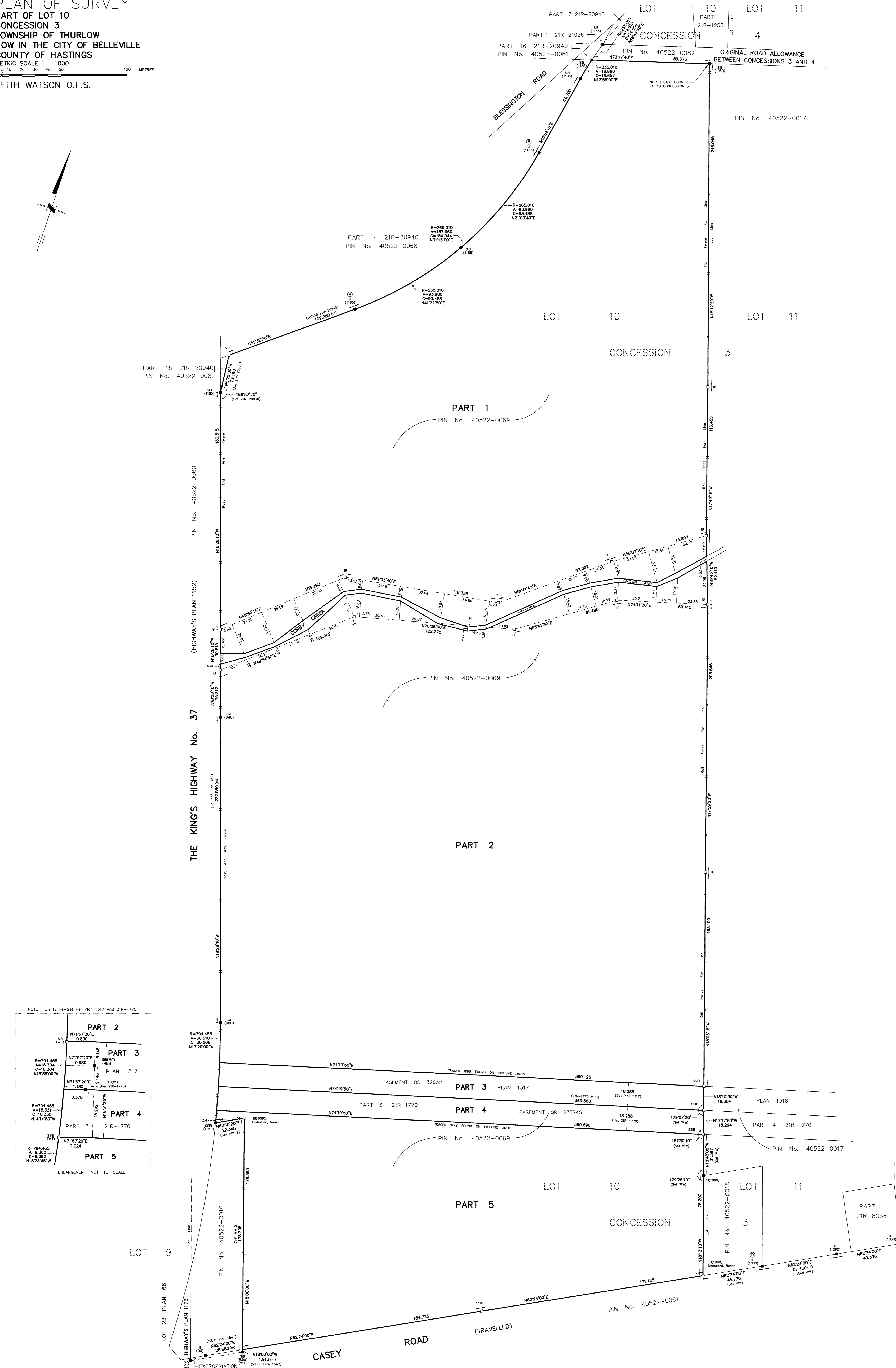
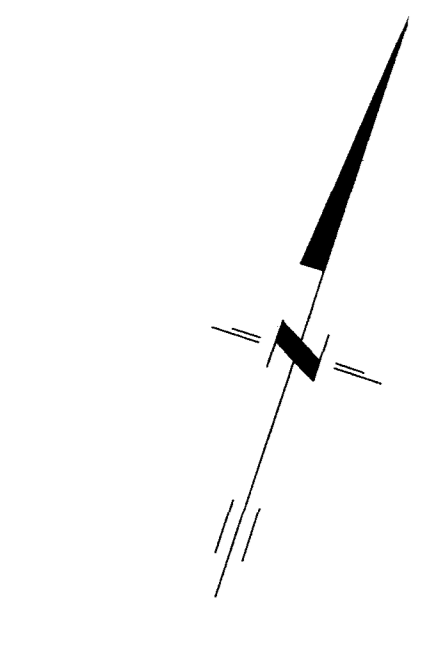
PLAN OF SURVEY
PART OF LOT 10
CONCESSION 3
TOWNSHIP OF THURLOW
NOW IN THE CITY OF BELLEVILLE
COUNTY OF HASTINGS
 METRIC SCALE 1 : 1000
 0 5 10 20 30 40 50 100 METRES
KEITH WATSON O.L.S.

PLAN 21R-24938
 RECEIVED AND DEPOSITED
 (Date) August 15, 2017
 REPRESENTATIVE FOR LAND REGISTRAR
 FOR THE LAND TITLES
 DIVISION OF HASTINGS (21)
 I REQUIRE THIS PLAN TO BE DEPOSITED
 UNDER THE LAND TITLES ACT.
 (Date) AUGUST 2017
 Keith Watson
 KEITH WATSON
 ONTARIO LAND SURVEYOR

SCHEDULE

PART	DESCRIPTION	PIN No.	AREA
1	PART OF LOT 10 CONCESSION 3	PART OF PIN No. 40522-0069	11.10 ± Ha.
2	PART OF LOT 10 CONCESSION 3	PART OF PIN No. 40522-0069	13.10 ± Ha.
3	PART OF LOT 10 CONCESSION 3	PART OF PIN No. 40522-0069	0.677 Ha.
4	PART OF LOT 10 CONCESSION 3	PART OF PIN No. 40522-0069	0.679 Ha.
5	PART OF LOT 10 CONCESSION 3	PART OF PIN No. 40522-0069	5.078 Ha.

PARTS 1, 2, 3, 4 AND 5 COMPRISE ALL OF PIN No. 40522-0069
 PART 3 - SUBJECT TO EASEMENT OR 32632
 PART 4 - SUBJECT TO EASEMENT OR 235745



- LEGEND :**
- DENOTES SURVEY MONUMENT FOUND
 - DENOTES SURVEY MONUMENT PLANTED
 - SB = STANDARD IRON BAR
 - SSB = SHORT STANDARD IRON BAR
 - IB = IRON BAR
 - (DHO) = DEPARTMENT OF HIGHWAYS, ONTARIO
 - (MM) = MARSHALL MACKLIN MONAGHAN O.L.S.
 - (RW) = RANSOM & WATSON O.L.S.
 - (1060) = WATSON LAND SURVEYORS LTD.
 - (1185) = JOHN GOLTZ O.L.S.
 - (OU) = ORIGIN UNKNOWN
 - (WT) = WITNESS
 - (m) = MEASURE

METRIC :
 DISTANCES AND COORDINATES SHOWN ON THIS PLAN ARE IN METRES AND CAN BE CONVERTED TO FEET BY DIVIDING BY 0.3048.

OBSERVED REFERENCE POINTS DERIVED FROM GPS OBSERVATIONS USING REAL TIME NETWORK (RTN), UTM ZONE 18, NAD83 (CSRS) 2010 COORDINATES TO URBAN ACCURACY PER SEC. 14 (2) OF O. REG 216/10

POINT ID	NORTHING	EASTING
A	4899079.69	310011.23
B	4899237.09	310106.63
C	4898280.55	310145.86
D	4898487.04	310536.77

COORDINATES CANNOT, IN THEMSELVES, BE USED TO RE-ESTABLISH THE CORNERS OR BOUNDARIES SHOWN ON THIS PLAN

NOTES :

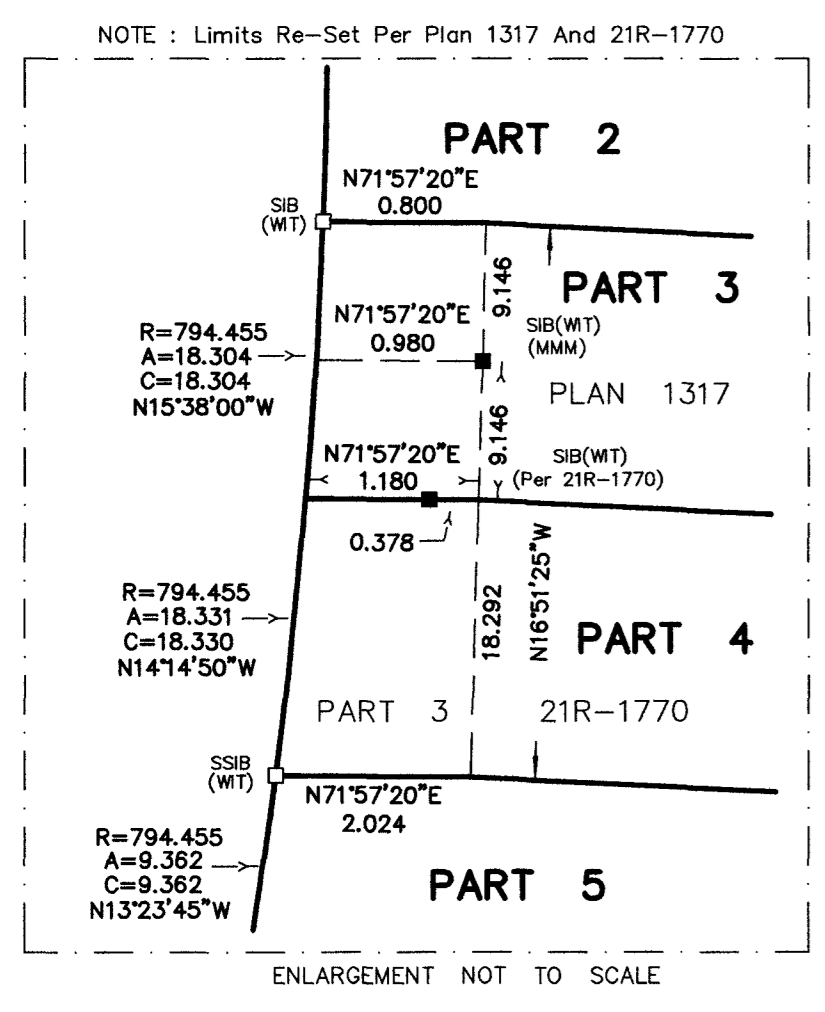
BEARINGS ARE UTM GRID BEARINGS AND ARE DERIVED FROM OBSERVED REFERENCE POINTS A AND B BY REAL TIME NETWORK OBSERVATIONS UTM ZONE 18, NAD 83 (CSRS) 2010

DISTANCES SHOWN ARE GROUND DISTANCES AND CAN BE CONVERTED TO GRID BY MULTIPLYING BY A COMBINED SCALE FACTOR OF 1.000031

WW DENOTES A PLAN OF SURVEY BY W. I. WATSON, O.L.S. DATED APRIL 6, 1977 JOB No. 5610-W-76

WW 2 DENOTES A PLAN OF SURVEY BY W. I. WATSON, O.L.S. DATED NOVEMBER 29, 1982 JOB No. 7651-M-82

YES TO THE WATER'S EDGE ARE PERPENDICULAR TO THE TRAVERSE LINE UNLESS OTHERWISE SHOWN.



SURVEYOR'S CERTIFICATE :
 I CERTIFY THAT :
 1. THIS SURVEY AND PLAN ARE CORRECT AND IN ACCORDANCE WITH THE SURVEYS ACT, THE SURVEYORS ACT AND THE LAND TITLES ACT AND THE REGULATIONS MADE UNDER THEM.
 2. THE SURVEY WAS COMPLETED ON THE 23RD DAY OF JULY, 2017.

AUGUST 9, 2017
 Keith Watson
 KEITH WATSON
 ONTARIO LAND SURVEYOR