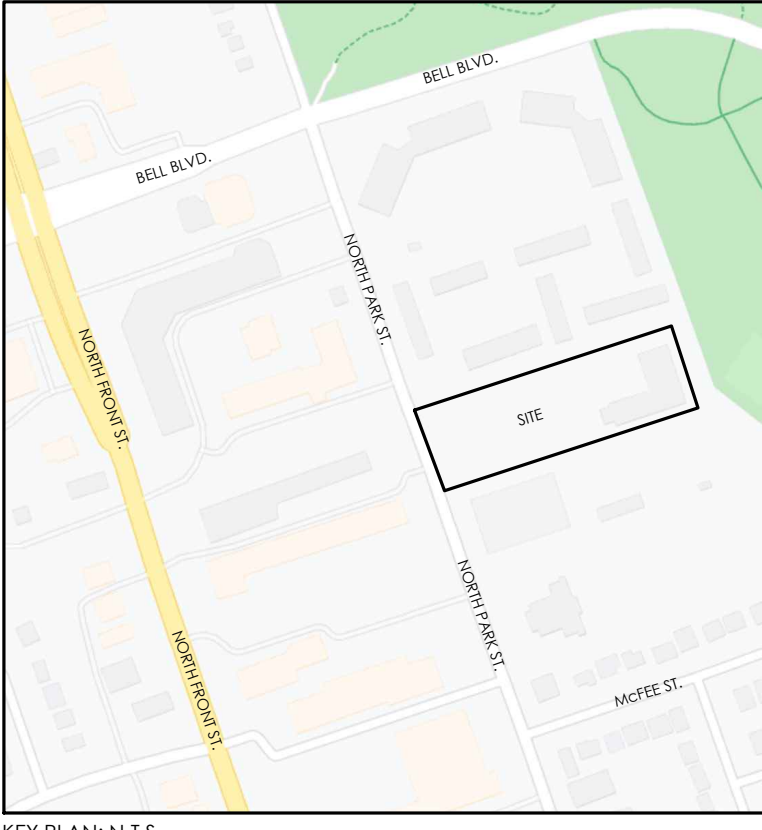
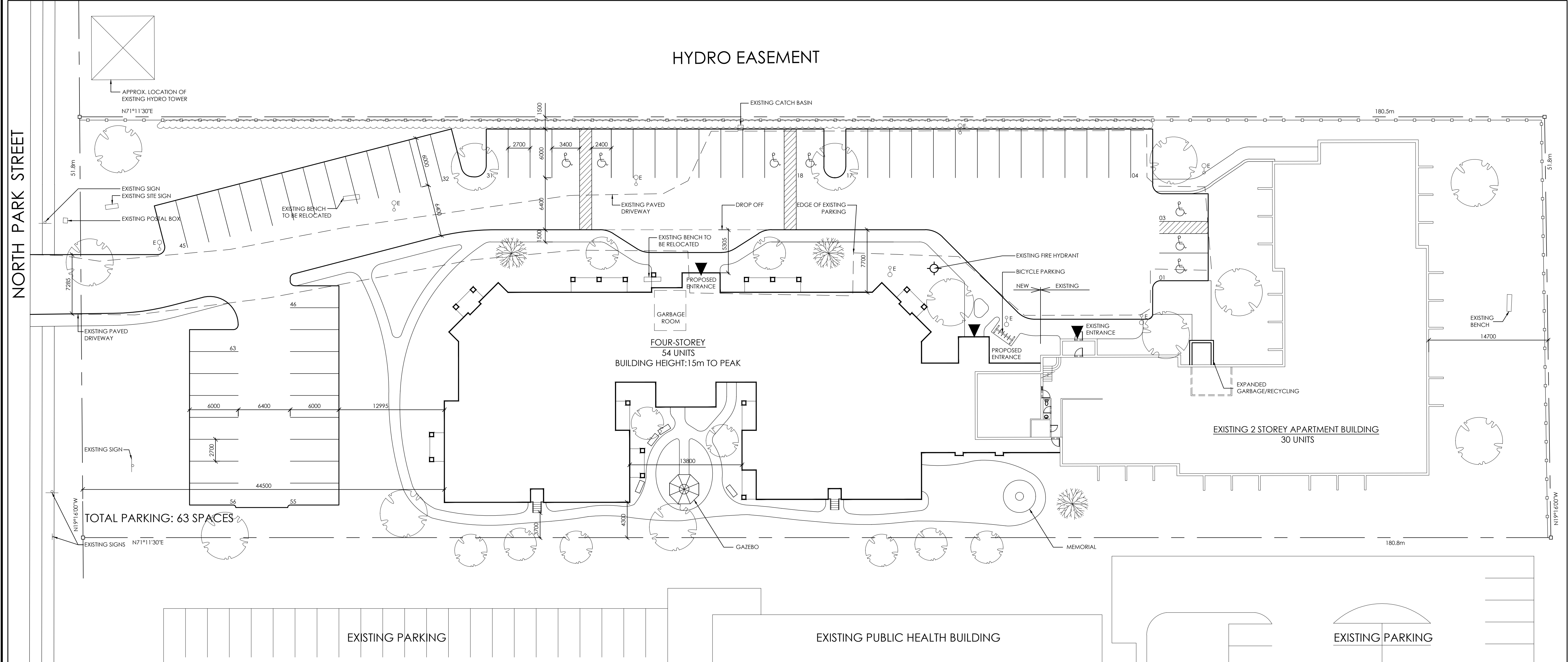


| NO. | REVISION                        | DATE          |
|-----|---------------------------------|---------------|
| 1   | ISSUED FOR PM: PRELIM CLASS D   | JULY 23, 2020 |
| 1   | ISSUED FOR REZONING APPLICATION | AUG. 28, 2020 |
|     |                                 |               |
|     |                                 |               |



**LEGEND**

- MH MANHOLE: SANITARY AND STORM (SEE CIVIL) ('E' DENOTES EXISTING)
- CB CATCHBASIN (SEE CIVIL) ('E' DENOTES EXISTING)
- FH FIRE HYDRANT (SEE CIVIL) ('E' DENOTES EXISTING)
- U/P UTILITY POLE
- ▲ DENOTES BUILDING EXIT
- TYPICAL CURB (REFER: CITY OF BELLEVILLE STANDARDS)
- - - DEPRESSION CURB (REFER: CITY OF BELLEVILLE STANDARDS)
- PROPERTY LINE
- - - EXISTING PROPERTY LINE
- DESIGNATED BARRIER FREE PARKING SPACE
- EV ELECTRIC VEHICLE CHARGING STATION
- BF BARRIER FREE PARKING SIGN
- FR FIRE ROUTE SIGN
- FR LIGHT STANDARD W/ STRAP ON FIRE ROUTE SIGN (SEE ELEC.)
- LIGHT POST (SEE ELEC.)
- WALL SCONCE (SEE ELEC.)
- BOLLARD LIGHT (SEE ELEC.)
- SI SIAMESE CONNECTION
- TACTILE WALKING SURFACE INDICATOR (TWSI)
- ▨ DIAGONAL PAINTED LINES
- T TRANSFORMER W/ BOLLARD (SEE ELEC.)
- SITE FENCING (SEE LANDSCAPE)
- EXISTING SITE LIGHTING

**SITE AREA: 9350m<sup>2</sup>**

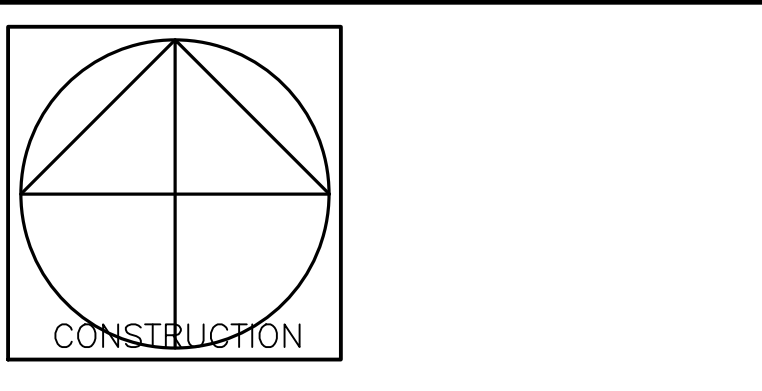
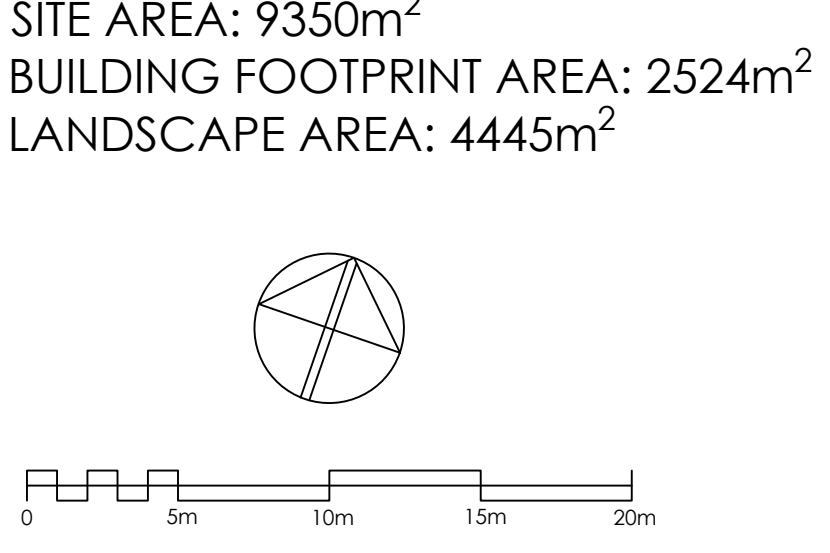
|                                      | CURRENT REQUIREMENT                                  | PROPOSED REQUIREMENT |
|--------------------------------------|--|----------------------|
| ZONE:                                | R6-3   | R6-3                 |
| NO. OF UNITS                         | 30 UNITS   | 54 NEW<br>84 TOTAL   |
| LOT FRONTAGE (MIN.)                  | 24.0m  | 51.8m                |
| LOT AREA PER DWELLING UNIT (MIN.)    | 161.5m <sup>2</sup>                                  | 111.3m <sup>2</sup>  |
| FRONT YARD                           | 7.5m   | 44.5m                |
| REAR YARD                            | 7.5m   | EXISTING = 14.7m     |
| INTERIOR SIDE YARD                   | GREATER OF 3m OR HALF HEIGHT OF MAIN BUILDING (7.5m) | 4.3m                 |
| BUILDING HEIGHT                      | 10.6m TO PEAK  | 15m TO PEAK          |
| LANDSCAPED AREAS                     | 40%  | 46%                  |
| WINDOWS FACING WINDOWS               | 15m (MIN.)   | 13.8m                |
| DRIVEWAY TO WINDOWED WALL            | 7.5m (MIN.)  | 7.7m                 |
| PROJECTION OF STEPS INTO A SIDE YARD | 0.6m (MAX.)  | 1.8m                 |

**PARKING CALCULATIONS:**

CURRENTLY REQUIRED:  
PARKING RATE: 0.25 SPACES/SENIOR CITIZEN HOUSING UNIT.  
EXISTING PARKING CURRENTLY ON SITE: 32 SPACES  
PARKING REQUIRED: [30 UNITS(EXISTING) + 54 UNITS(PROPOSED)] x 0.25 SPACES/UNIT = 21 SPACES

PARKING PROVIDED: 63 SPACES

| PARKING SPACE:                           | 2.7m X 6.0m   | PROVIDED: 2.7 x 6.0                 |
|--|---|-------------------------------------|
| ACCESSIBLE PARKING SPACE SIZE PROVISIONS | REQUIRED (BY AODA):<br>TYPE A: 3.4 x 5.2<br>TYPE B: 2.4 x 5.2 | PROVIDED:<br>TYPE A: 2<br>TYPE B: 3 |
| MIN AISLE WIDTH                          | REQUIRED: 6.4 m   | PROVIDED: 6.4 m                     |



**Vandenberg & Wildeboer**  
A · R · C · H · I · T · E · C · T · S

www.vandenberg-wildeboer.com Telephone: 613.287.0144 Fax: 613.271.8659 email: info@vandenberg-wildeboer.com  
1788 COLBY DRIVE SUITE 100 BARRABENGOVILLE QUEBEC G3A 1K6 CANADA

PROJECT TITLE  
PARKSIDE VILLAGE SENIORS APTS.  
193 N Park St, Belleville, ON K8P 4P1

DRAWING TITLE  
SITE PLAN

DESIGNED BY: RV  
DRAWN BY: JN  
START DATE: 2020  
SCALE: 1:250  
PROJECT NO. 2012

DRAWING NO.  
**A000**