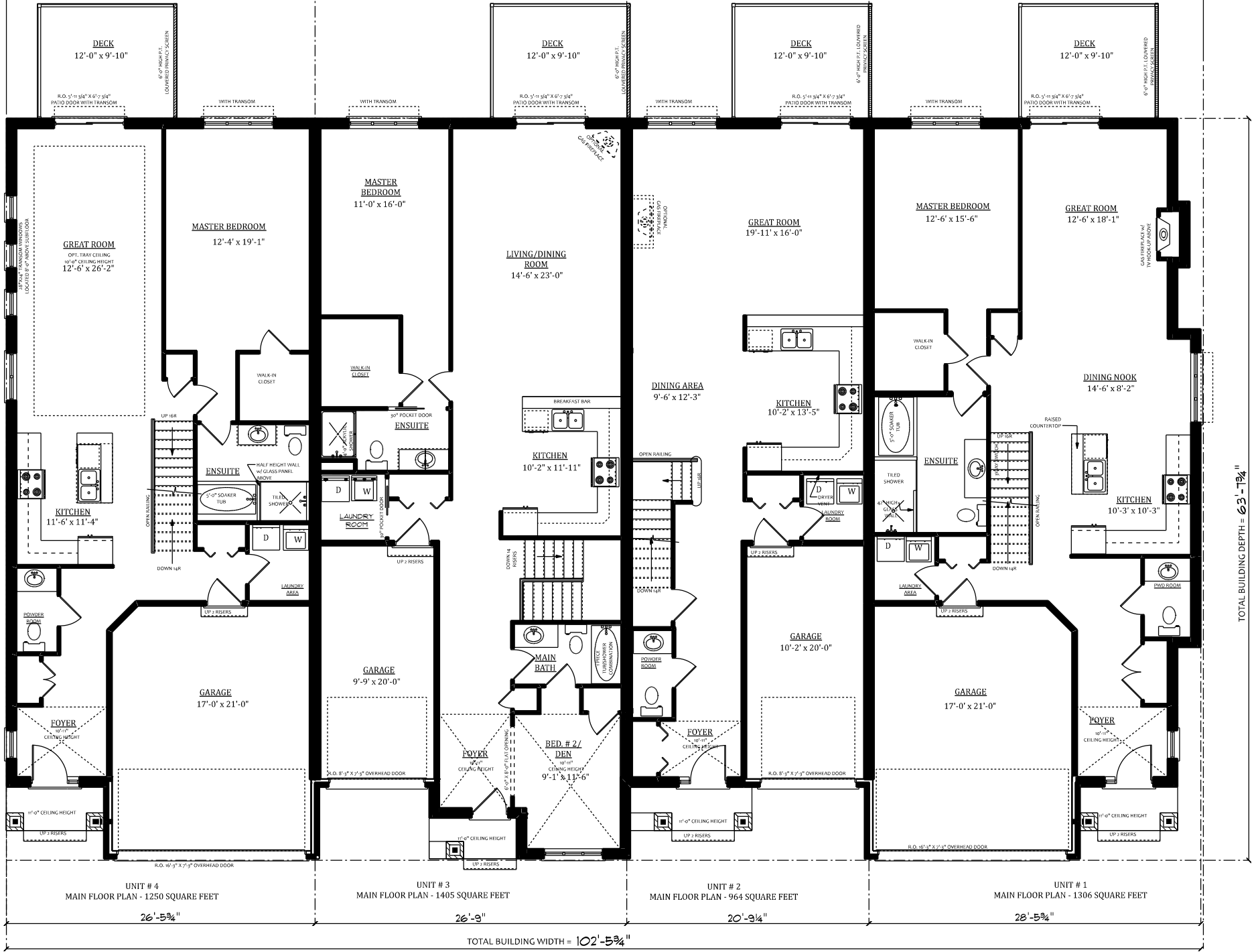




CLOVERLEAF - 4 UNIT BLOCK  
 FRONT ELEVATION - EAST SIDE (19.4M x 31.3M)



TOTAL BUILDING DEPTH = 63'-1 1/4"

TOTAL BUILDING WIDTH = 102'-5 3/4"

UNIT # 4  
MAIN FLOOR PLAN - 1250 SQUARE FEET  
26'-5 3/4"

UNIT # 3  
MAIN FLOOR PLAN - 1405 SQUARE FEET  
26'-9"

UNIT # 2  
MAIN FLOOR PLAN - 964 SQUARE FEET  
20'-9 1/4"

UNIT # 1  
MAIN FLOOR PLAN - 1306 SQUARE FEET  
28'-5 3/4"

PROPOSED SETBACK TO SETBACK DISTANCE = 102'-8 1/4"

LINE OF BUILDING BELOW

NOTE: STUCCO IS DIMENSIONED FROM EXTERIOR SHEATHING.

MASTER BEDROOM

19'-10" X 16'-2"

(3) R.O. 2'-4 3/8" X 1'-6" TRANSOM LOCATED 7'-0" ABOVE SUBFLOOR

SITTING AREA

9'-8" X 15'-4"

BEDROOM # 2

13'-7" X 11'-4"

BEDROOM # 2

10'-1" X 12'-8" (15'-6")

BEDROOM # 3

13'-7" X 11'-8"

BEDROOM # 2

11'-7" X 11'-4"

SITTING AREA

9'-8" X 15'-4"

BEDROOM # 3

11'-7" X 11'-8"

MAIN BATH

1 PIECE TUB/SHOWER COMBINATION

MAIN BATH

1 PIECE TUB/SHOWER COMBINATION

ENSUITE

ENSUITE

WALK-IN CLOSET

DOWN 16R

OPEN TO BELOW

OPEN WALKING

SLOPED CEILING

WALK-IN CLOSET

SLOPED CEILING

8'-0" CEILING HEIGHT LINE

VAULTED CEILING

ARCHED TRANSOM

SLOPED CEILING

OPEN RAIL

DOWN 16R

DOWN 16R

OPEN RAIL

LINE OF BUILDING BELOW

UNIT # 4  
MAIN FLOOR PLAN - 715 SQUARE FEET

UNIT # 2  
SECOND FLOOR PLAN - 967 SQUARE FEET

UNIT # 1  
SECOND FLOOR PLAN - 769 SQUARE FEET

CLOVERLEAF - 4 UNIT BLOCK  
SECOND FLOOR - EAST SIDE (19.4M x 31.3M)