



UNIT # 4
FRONT ELEVATION - 1892 SQUARE FEET

UNIT # 3
FRONT ELEVATION - 1307 SQUARE FEET

UNIT # 2
FRONT ELEVATION - 1925 SQUARE FEET

UNIT # 1
FRONT ELEVATION - 1926 SQUARE FEET

CLOVERLEAF- 4 UNIT BLOCK
FRONT ELEVATION - NORTH SIDE (19.4M x 31.13M)

TOTAL BUILDING WIDTH = 100'-0 3/4"

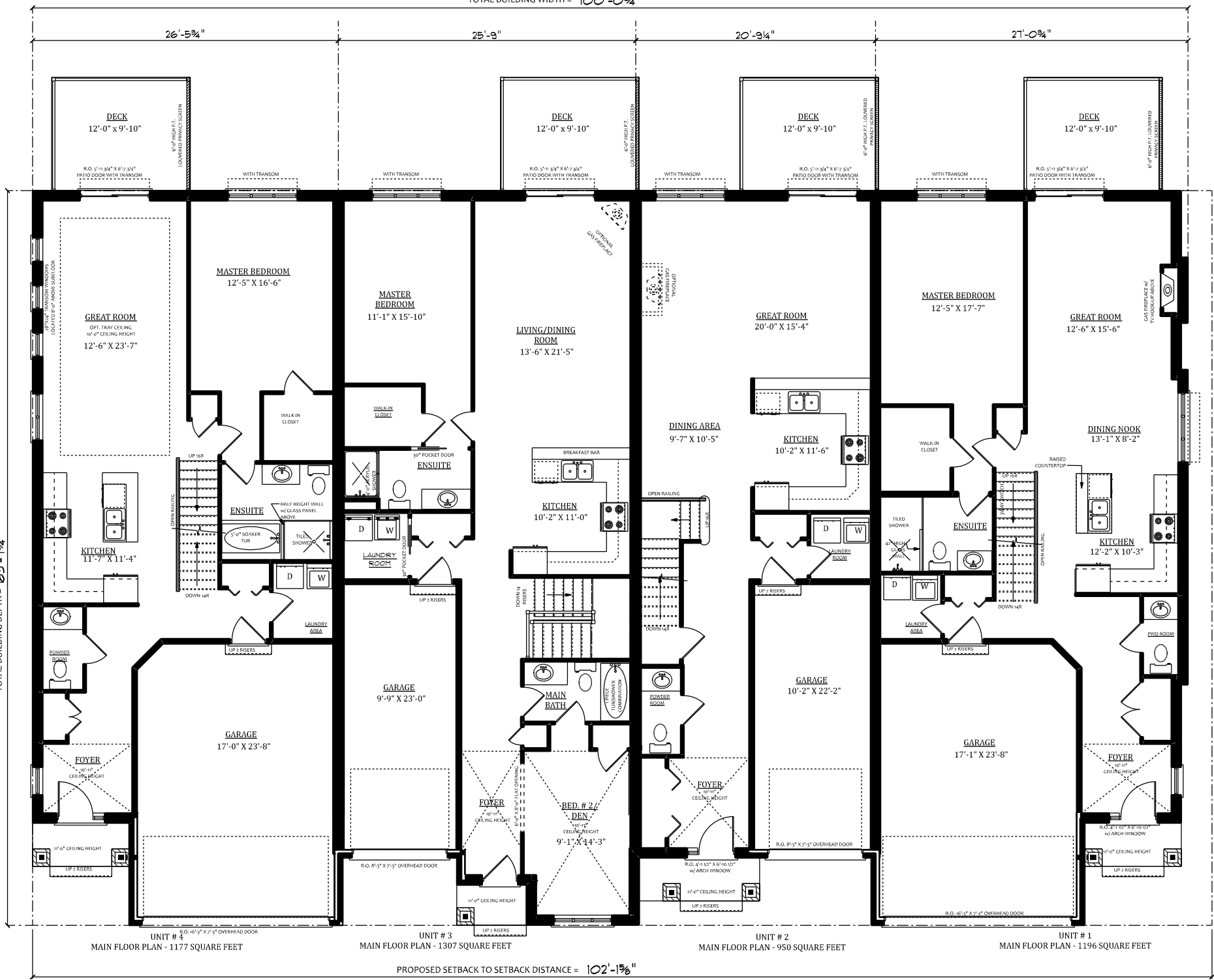
26'-5 3/4"

25'-9"

20'-9 1/4"

21'-0 3/4"

TOTAL BUILDING DEPTH = 63'-7 1/4"



UNIT # 4
MAIN FLOOR PLAN - 1177 SQUARE FEET

UNIT # 3
MAIN FLOOR PLAN - 1307 SQUARE FEET

UNIT # 2
MAIN FLOOR PLAN - 950 SQUARE FEET

UNIT # 1
MAIN FLOOR PLAN - 1196 SQUARE FEET

PROPOSED SETBACK TO SETBACK DISTANCE = 102'-1 5/8"

CLOVERLEAF- 4 UNIT BLOCK MAIN FLOOR - NORTH SIDE (19.4M x 31.13M)

NOTE: STUCCO IS DIMENSIONED FROM EXTERIOR SHEATHING.

LINE OF BUILDING BELOW

(3) 1/0 2'-4 1/8" X 4'-6" TRANSOM LOCATED 2'-0" ABOVE SUBFLOOR

MASTER BEDROOM
19'-11" X 16'-7"

SITTING AREA
9'-8" X 15'-4"

BEDROOM #2
12'-2" X 11'-4"

ENSUITE

4'-0" CEILING SHOWER
8'-0" TILED CONCRETE TUB

ENSUITE

1 PIECE TUBSHOWER COMBINATION

BEDROOM #3
12'-2" X 11'-8"

MAIN BATH

BEDROOM #2
10'-1" X 12'-8" (15'-6")

8'-0" CEILING HEIGHT LINE

VAULTED CEILING

ARCHED TRANSOM

WALK-IN CLOSET

OPEN TO BELOW
OPEN RAILING

SLOPED CEILING

WALK-IN CLOSET

SLOPED CEILING

DOWN 1BR

DOWN 1BR

SITTING AREA
9'-8" X 15'-4"

BEDROOM #2
11'-7" X 11'-4"

OPEN RAIL

DOWN 1BR

BEDROOM #3
11'-7" X 12'-0"

1 PIECE TUBSHOWER COMBINATION

MAIN BATH

UNIT #4
MAIN FLOOR PLAN - 715 SQUARE FEET

UNIT #2
SECOND FLOOR PLAN - 975 SQUARE FEET

UNIT #1
SECOND FLOOR PLAN - 730 SQUARE FEET

CLOVERLEAF- 4 UNIT BLOCK
SECOND FLOOR - NORTH SIDE (19.4M x 31.13M)