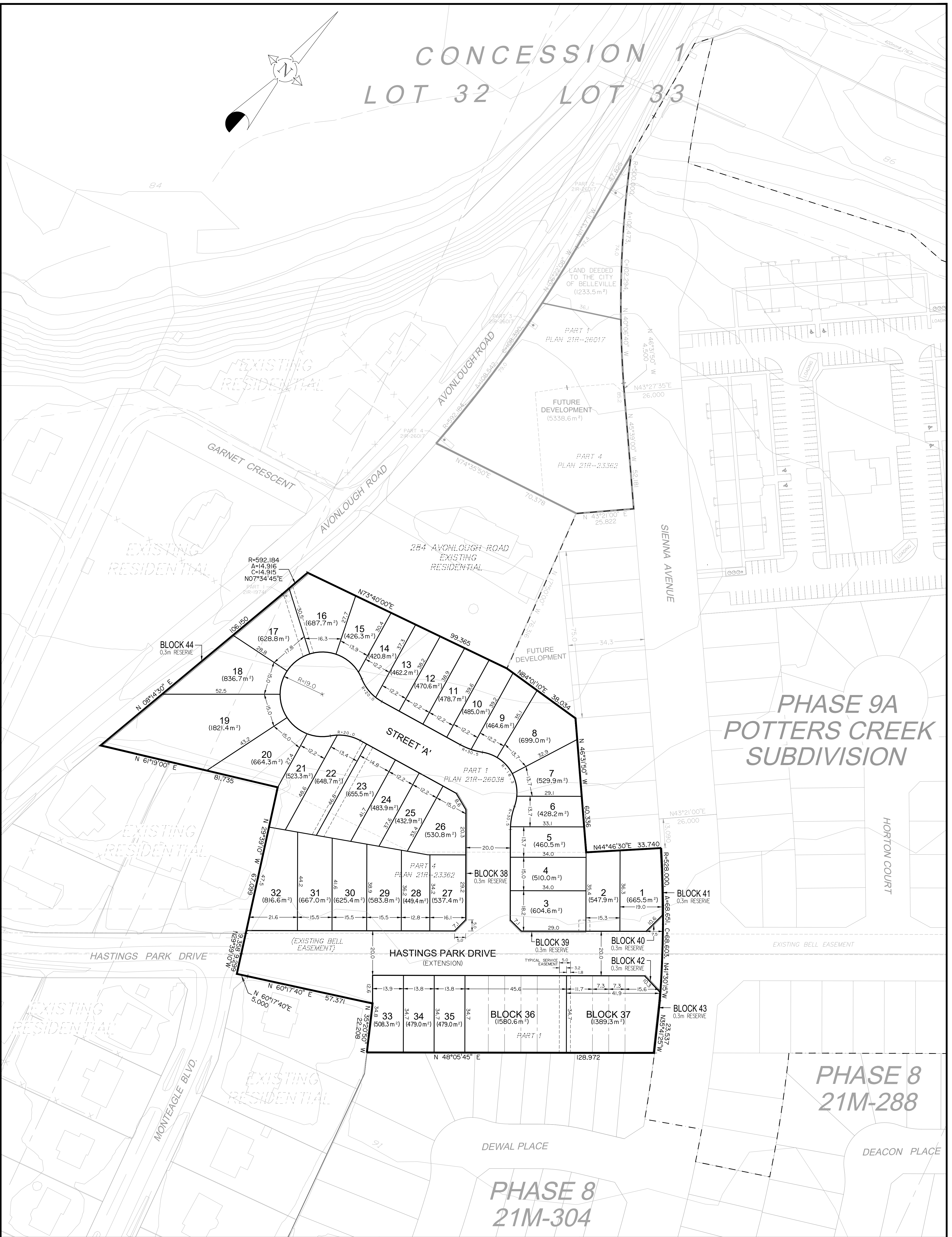


# CONCESSION 1 LOT 32 LOT 33



## PHASE 9A POTTERS CREEK SUBDIVISION

## PHASE 8 21M-288

## PHASE 8 21M-304

**AMENDED  
DRAFT APPROVED PLAN  
OF SUBDIVISION 12T-06501**

**POTTERS CREEK - PHASE 9B**

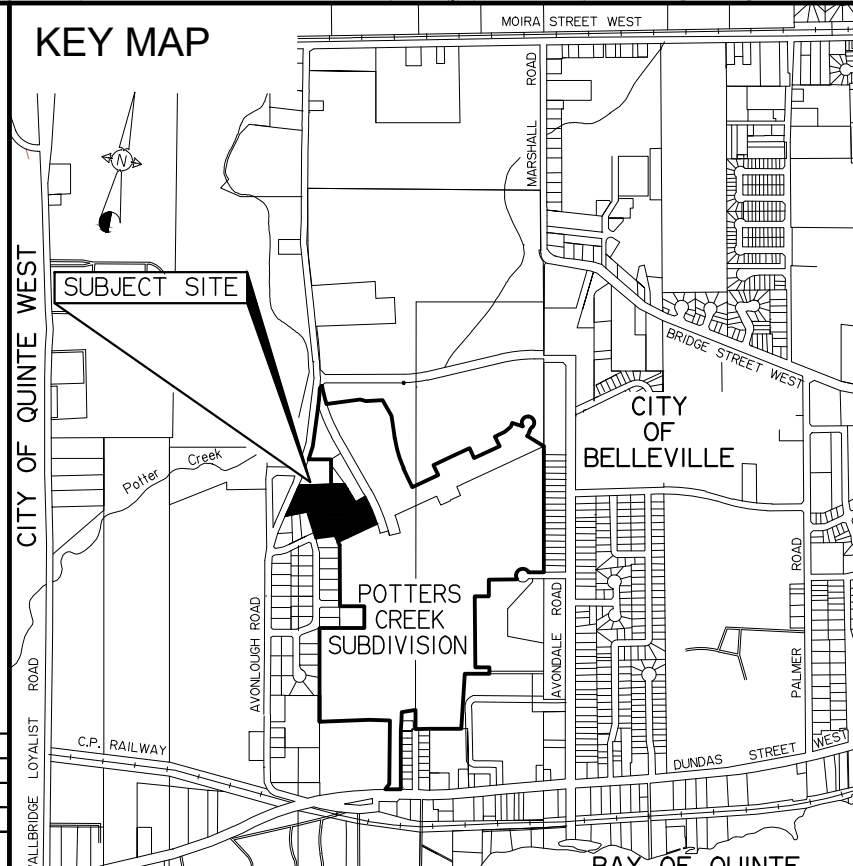
PART 1, 21R-26038  
PART OF LOTS 32 & 33  
CONCESSION 1

GEOGRAPHIC TOWNSHIP OF SIDNEY,  
NOW IN THE  
**CITY OF BELLEVILLE,**  
COUNTY OF HASTINGS

SCALE 1:750

0 5 10 15 20 25 30 35 40 45 50 55 60 65 70 75m

NO. REVISION DATE APPROVED  
DRAWN BY: LB CHECKED BY: R.F.A. DATE: 11/15/22



**LAND USE SCHEDULE**

LAND USE	AREA(m <sup>2</sup> )	AREA%UNITS
LOTS 1-4, 16-20 & 29-32 -15.0m (510.0m <sup>2</sup> ) MIN. - SINGLE-DETACHED LOTS	9659.7	30.3 13
LOTS 5-8, 15 & 33-35 -13.7m (426.3m <sup>2</sup> ) MIN. - SINGLE-DETACHED LOTS	4010.2	12.6 8
LOTS 9-14 & 21-28 -12.2m (420.8m <sup>2</sup> ) MIN. - SINGLE-DETACHED LOTS	7043.8	22.1 14
BLOCKS 36 & 37 - 7.3m (253.3m <sup>2</sup> ) MIN. - FREEHOLD BUNGALOW TOWNHOUSE UNITS	2969.9	9.3 9
BLOCKS 38-44 - 0.3m RESERVES	92.7	0.3
20.0m MUNICIPAL ROAD ALLOWANCE - STREETS 'A' AND HASTINGS PARK DRIVE - EXTENSION (LENGTH = 366.6m)	8075.9	25.4
<b>SITE TOTAL</b>	<b>31852.2m<sup>2</sup></b>	<b>100.0% 44</b>

**METRIC NOTE:**  
DISTANCES SHOWN ON THIS PLAN ARE IN METRES AND CAN BE CONVERTED TO FEET BY DIVIDING BY 0.3048.

**CONTOURS NOTE:**  
CONTOURS PREPARED USING DATA OBTAINED BY OTHERS. CONTOURS DRAWN AT INTERVALS OF 0.5m.

**ADDITIONAL INFORMATION REQUIRED UNDER SECTION 51(17) OF THE PLANNING ACT.**

(a) SEE SURVEYOR'S CERTIFICATE.  
(b) AS SHOWN ON DRAFT PLAN.  
(c) AS SHOWN ON DRAFT PLAN.  
(d) SEE LAND USE SUMMARY.  
(e) SEE DRAFT PLAN.  
(f) AS SHOWN ON DRAFT PLAN.  
(g) AS SHOWN ON DRAFT PLAN.  
(h) MUNICIPAL WATER AND SANITARY SEWER  
(i) SHALLOW LOAM OVER BEDROCK.  
(j) AS SHOWN ON DRAFT PLAN.  
(k) GARBAGE COLLECTION, FIRE PROTECTION, ROAD MAINTENANCE, SCHOOL BUSES, ETC.  
(l) AS SHOWN ON DRAFT PLAN.

**PLAN COPYRIGHT**  
ALL ORIGINAL DRAWINGS AND RELATED DOCUMENTS ARE THE COPYRIGHT PROPERTY OF RFA PLANNING CONSULTANT INC. REPRODUCTION IN WHOLE OR IN PART IS FORBIDDEN WITHOUT THE PRIOR WRITTEN CONSENT OF RFA PLANNING CONSULTANT INC.

THESE DRAWINGS AND DOCUMENTS MAY NOT BE USED FOR ANY PURPOSES OTHER THAN FOR THE PROJECT FOR WHICH THEY ARE PREPARED. THE PLAN IS NOT AVAILABLE TO THIRD PARTY WITHOUT THE WRITTEN CONSENT OF RFA PLANNING CONSULTANT INC.

**SURVEYOR'S CERTIFICATE**

I CERTIFY THAT THE BOUNDARIES OF THE LAND TO BE SUBDIVIDED ARE CORRECTLY SHOWN.

*Keith Watson* NOVEMBER 15, 2022  
DATE  
KEITH WATSON,  
ONTARIO LAND SURVEYOR.

**WATSON LAND SURVEYORS LTD.**  
218 CHURCH STREET, BELLEVILLE, ONTARIO  
(613) 962-9521

