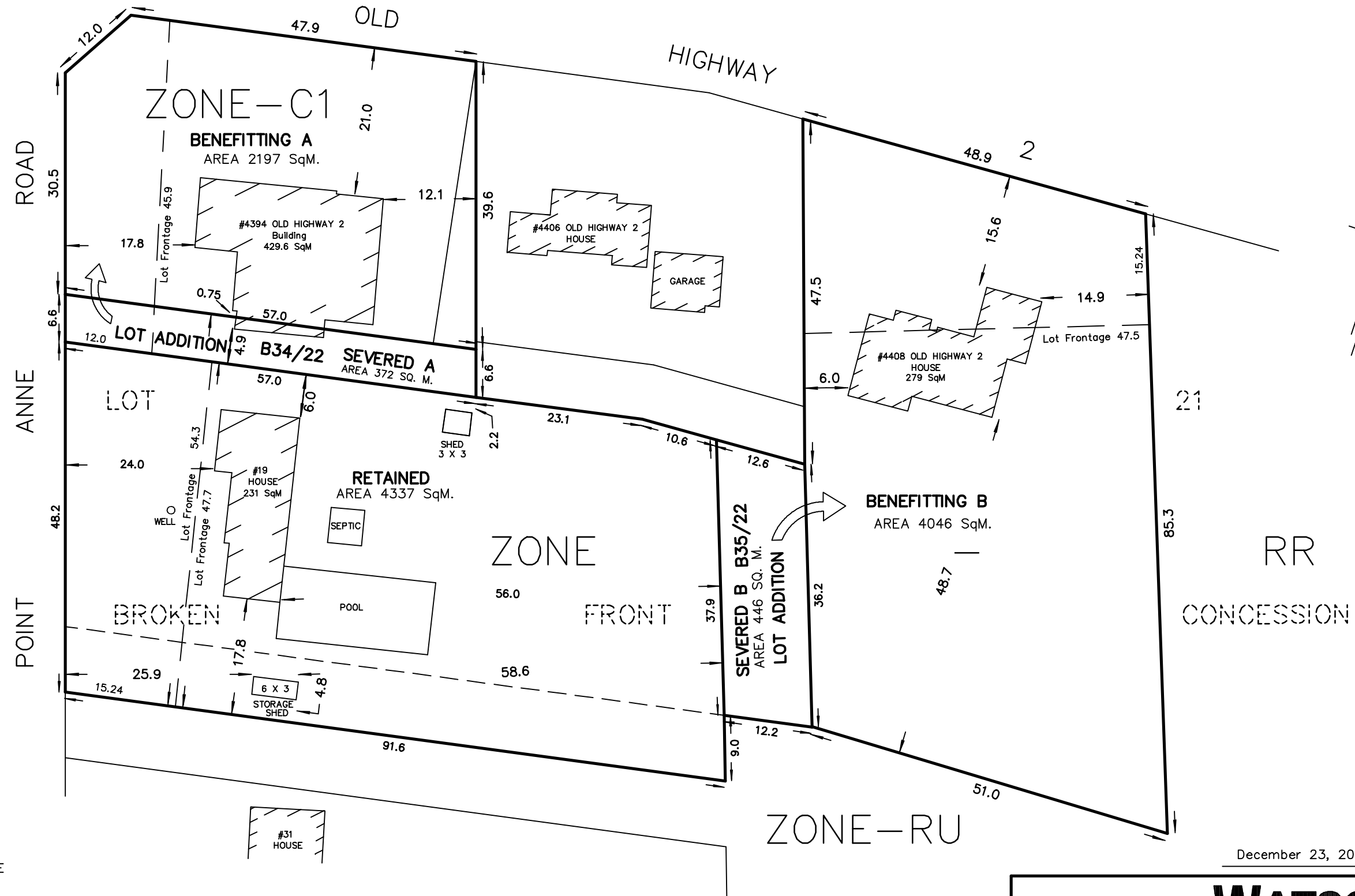


SKETCH for SEVERANCE APPLICATION

METRIC SCALE 1 : 600

CAUTION

THIS IS NOT A PLAN OF SURVEY AND SHALL NOT BE USED EXCEPT FOR THE PURPOSE INDICATED IN THE TITLE BLOCK



NOTES :

19 POINT ANNE ROAD
 PART OF LOT 21
 BROKEN FRONT CONCESSION
 TOWNSHIP OF THURLOW
 NOW IN THE CITY OF BELLEVILLE
 COUNTY OF HASTINGS

DIMENSIONS AND INFORMATION SHOWN ARE DERIVED FROM PLANS 21R-19153,
 21R-11150 AND 21R-809

DISTANCES SHOWN ON THIS PLAN ARE IN METRES
 AND CAN BE CONVERTED TO FEET BY DIVIDING BY 0.3048.

THIS SKETCH IS AN ORIGINAL IF EMBOSSED BY THE SURVEYOR'S SEAL.

December 23, 2022

218 CHURCH STREET
 BELLEVILLE, ONTARIO

WATSON
 LAND SURVEYORS Ltd.

K8N - 3C3
 (613) 962 - 9521

© Copyright WATSON LAND SURVEYORS LTD. 2021

PROJECT N^o 13226-B-21