

PLAN OF SURVEY OF  
PART OF LOT 7  
CONCESSION 9  
TOWNSHIP OF THURLOW  
NOW IN THE CITY OF BELLEVILLE  
COUNTY OF HASTINGS

METRIC SCALE 1 : 1000  
0 5 10 20 30 40 50 100 METRES

KEITH WATSON O.L.S.

SCHEDULE				
PART	LOT/BLOCK	CONCESSION/PLAN	PIN	AREA
1	PART OF LOT 7	CONCESSION 9	PART OF 40531-0003 (LT)	0.673 Ha.
2	PART OF LOT 7	CONCESSION 9	PART OF 40531-0003 (LT)	0.670 Ha.

PARTS 1 AND 2 - PART OF PIN 40531-0003 (LT)

PLAN 21R-

RECEIVED AND DEPOSITED

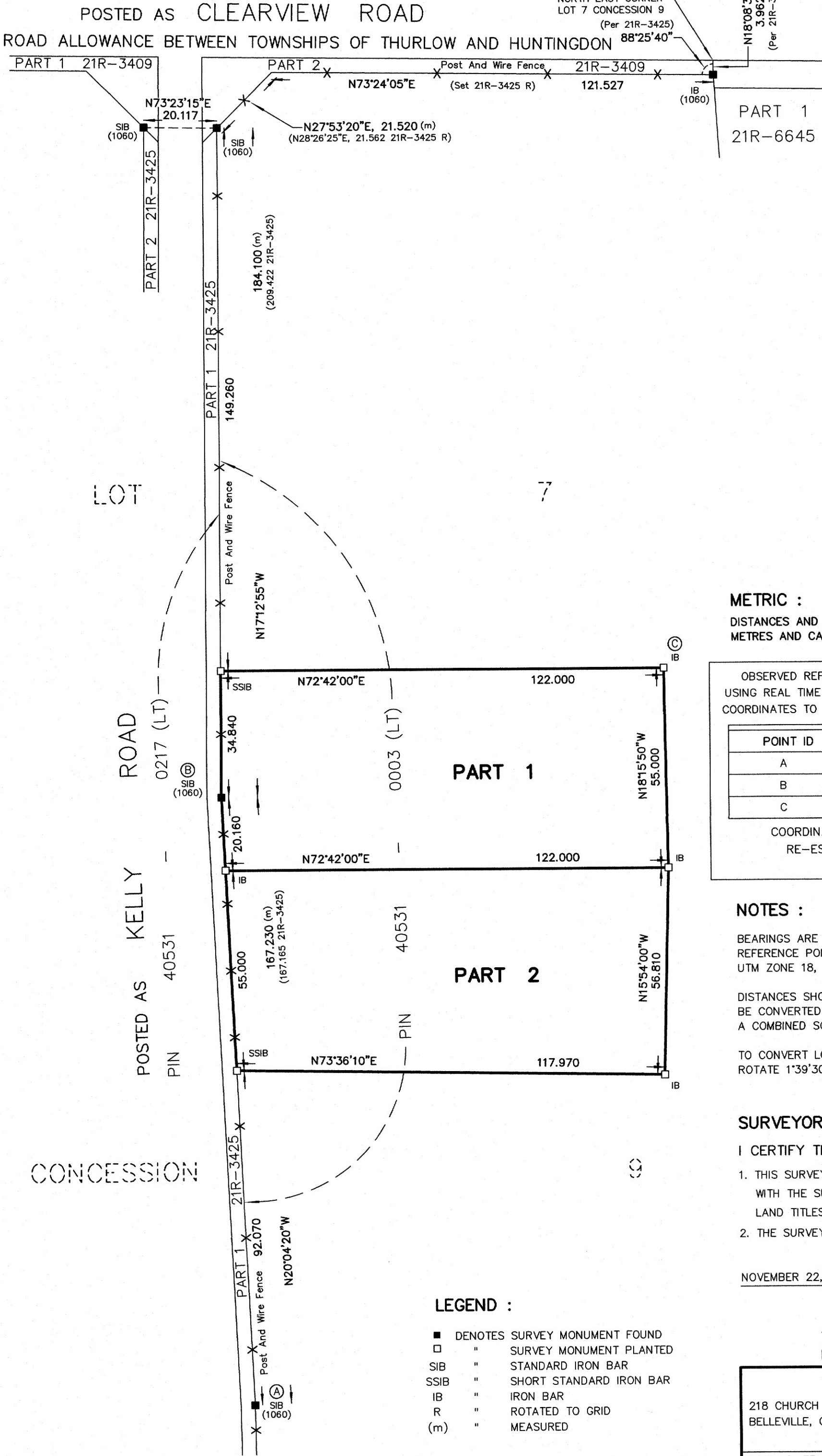
(Date) 2023

REPRESENTATIVE FOR LAND REGISTRAR  
FOR THE LAND TITLES  
DIVISION OF HASTINGS (21)

I REQUIRE THIS PLAN TO BE DEPOSITED  
UNDER THE LAND TITLES ACT.

(Date) NOVEMBER, 2023

KEITH WATSON  
ONTARIO LAND SURVEYOR



METRIC :  
DISTANCES AND COORDINATES SHOWN ON THIS PLAN ARE IN METRES AND CAN BE CONVERTED TO FEET BY DIVIDING BY 0.3048.

OBSERVED REFERENCE POINTS DERIVED FROM GPS OBSERVATIONS USING REAL TIME NETWORK (RTN), UTM ZONE 18, NAD83 (CSRS) 2010 COORDINATES TO RURAL ACCURACY PER SEC. 14 (2) OF O. REG 216/10

POINT ID	NORTHING	EASTING
A	4910277.09	305287.50
B	4910434.17	305230.12
C	4910503.73	305336.28

COORDINATES CANNOT, IN THEMSELVES, BE USED TO RE-ESTABLISH THE CORNERS OR BOUNDARIES SHOWN ON THIS PLAN

NOTES :  
BEARINGS ARE UTM GRID BEARINGS AND ARE DERIVED FROM OBSERVED REFERENCE POINTS A AND B BY REAL TIME NETWORK OBSERVATIONS UTM ZONE 18, NAD 83 (CSRS) 2010  
DISTANCES SHOWN ARE GROUND DISTANCES AND CAN BE CONVERTED TO GRID BY MULTIPLYING BY A COMBINED SCALE FACTOR OF 1.000055  
TO CONVERT LOCAL ASTRONOMIC BEARINGS TO GRID BEARINGS ROTATE 1°39'30" CLOCKWISE

SURVEYOR'S CERTIFICATE :  
I CERTIFY THAT :  
1. THIS SURVEY AND PLAN ARE CORRECT AND IN ACCORDANCE WITH THE SURVEYS ACT, THE SURVEYORS ACT AND THE LAND TITLES ACT AND THE REGULATIONS MADE UNDER THEM.  
2. THE SURVEY WAS COMPLETED ON THE 9<sup>th</sup> DAY OF NOVEMBER, 2023.

NOVEMBER 22, 2023  
KEITH WATSON  
ONTARIO LAND SURVEYOR

THIS PLAN OF SURVEY RELATES TO AOLS  
PLAN SUBMISSION FORM NUMBER V-54128.

218 CHURCH STREET  
BELLEVILLE, ONTARIO

**WATSON**  
LAND SURVEYORS Ltd.

K8N - 3C3  
(613) 962 - 9521

CREW CHIEF : A. FIELDING  
DRAFTED BY : K. COLE

PROJECT № 14131-K-22