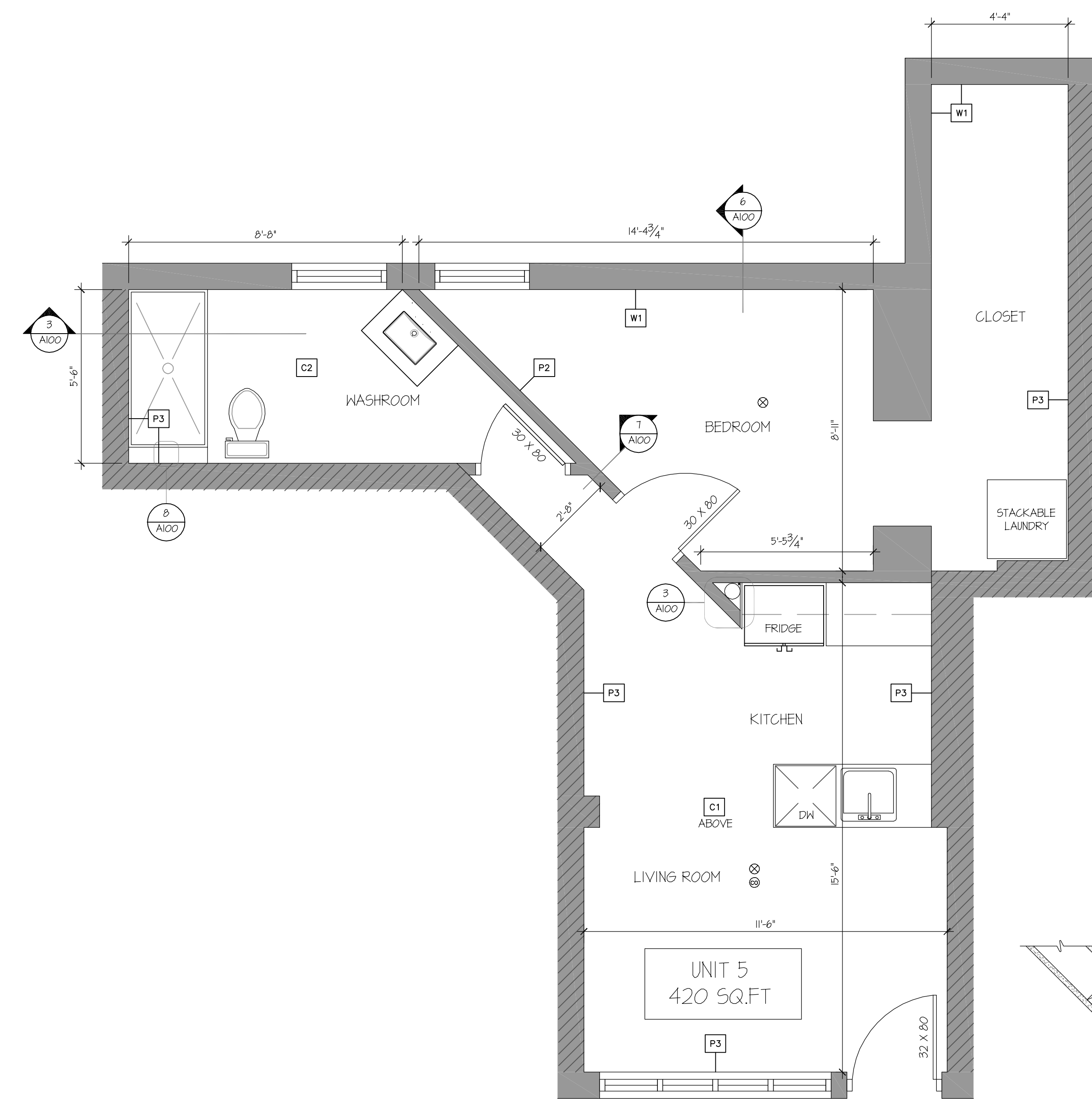
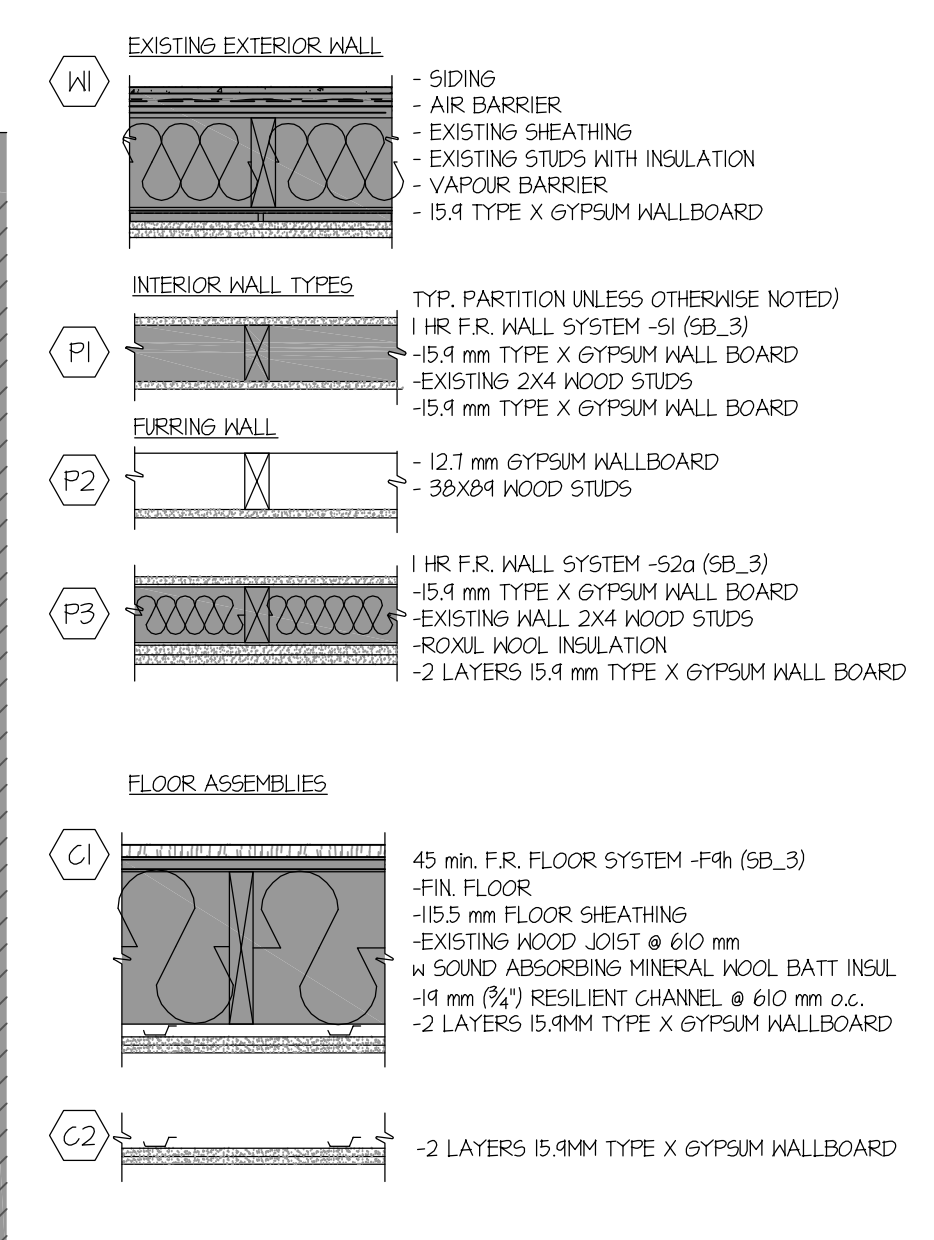


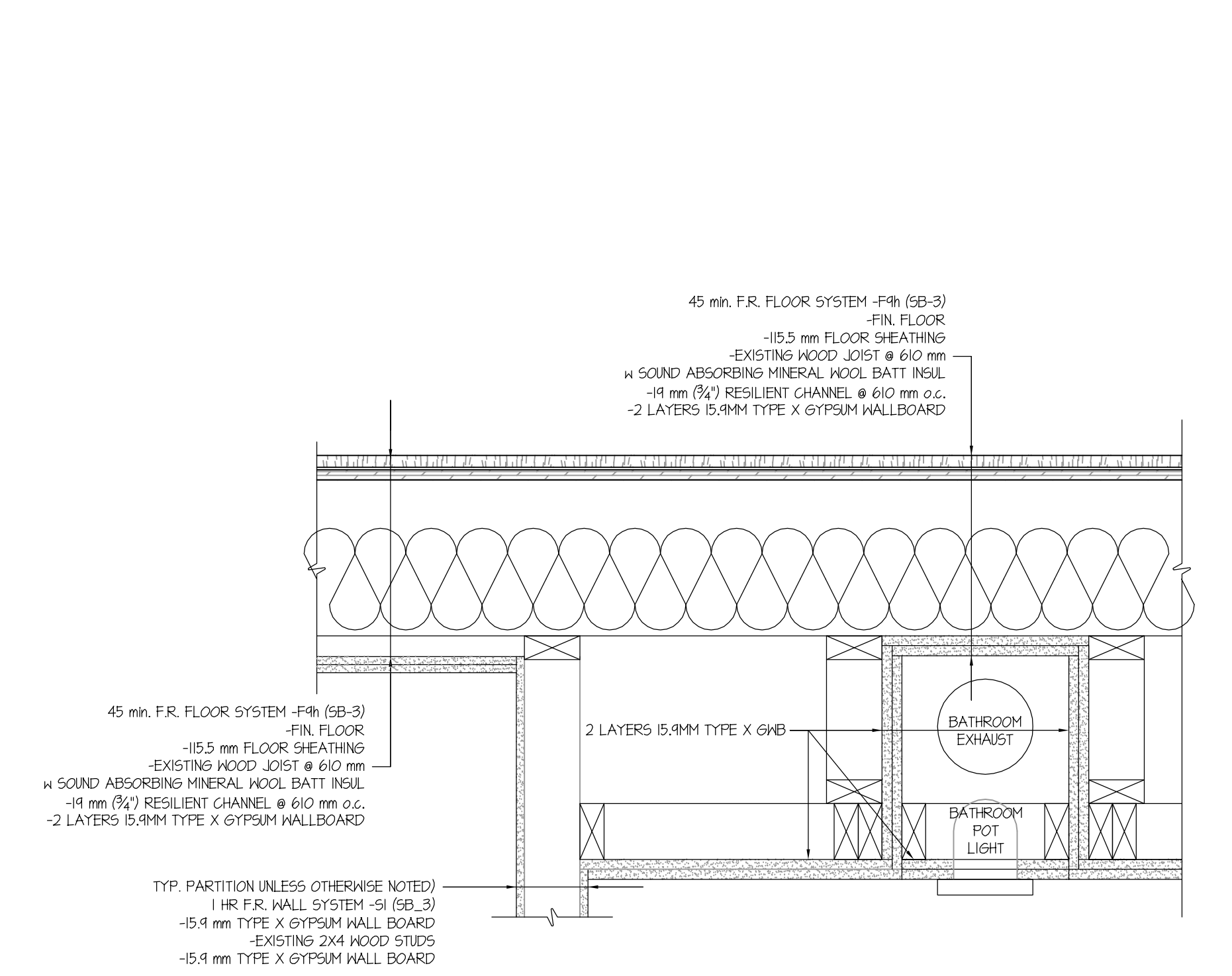
1 EXISTING UNIT 5 LAYOUT
SCALE: 3/8" = 1'-0"



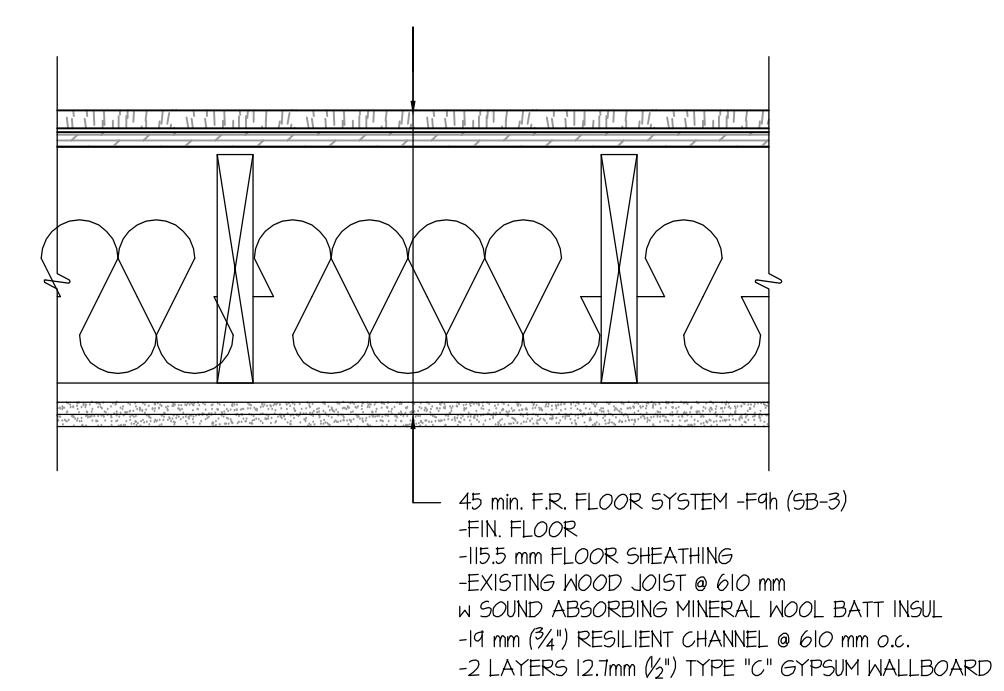
2 PROPOSED UNIT 5 LAYOUT
SCALE: 3/8" = 1'-0"



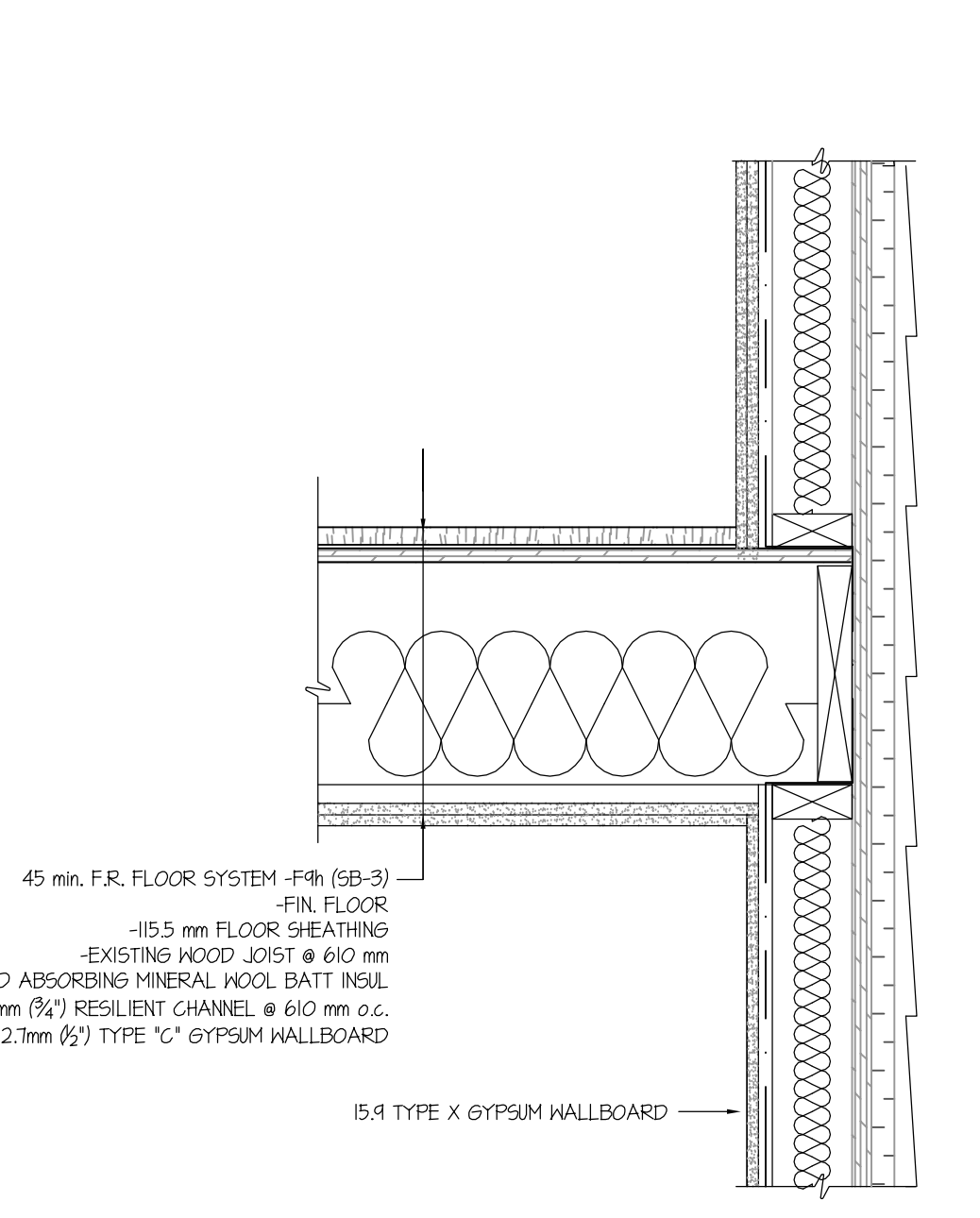
3 SECTION @ VENT PENETRATION
SCALE: 1-1/2" = 1'-0"



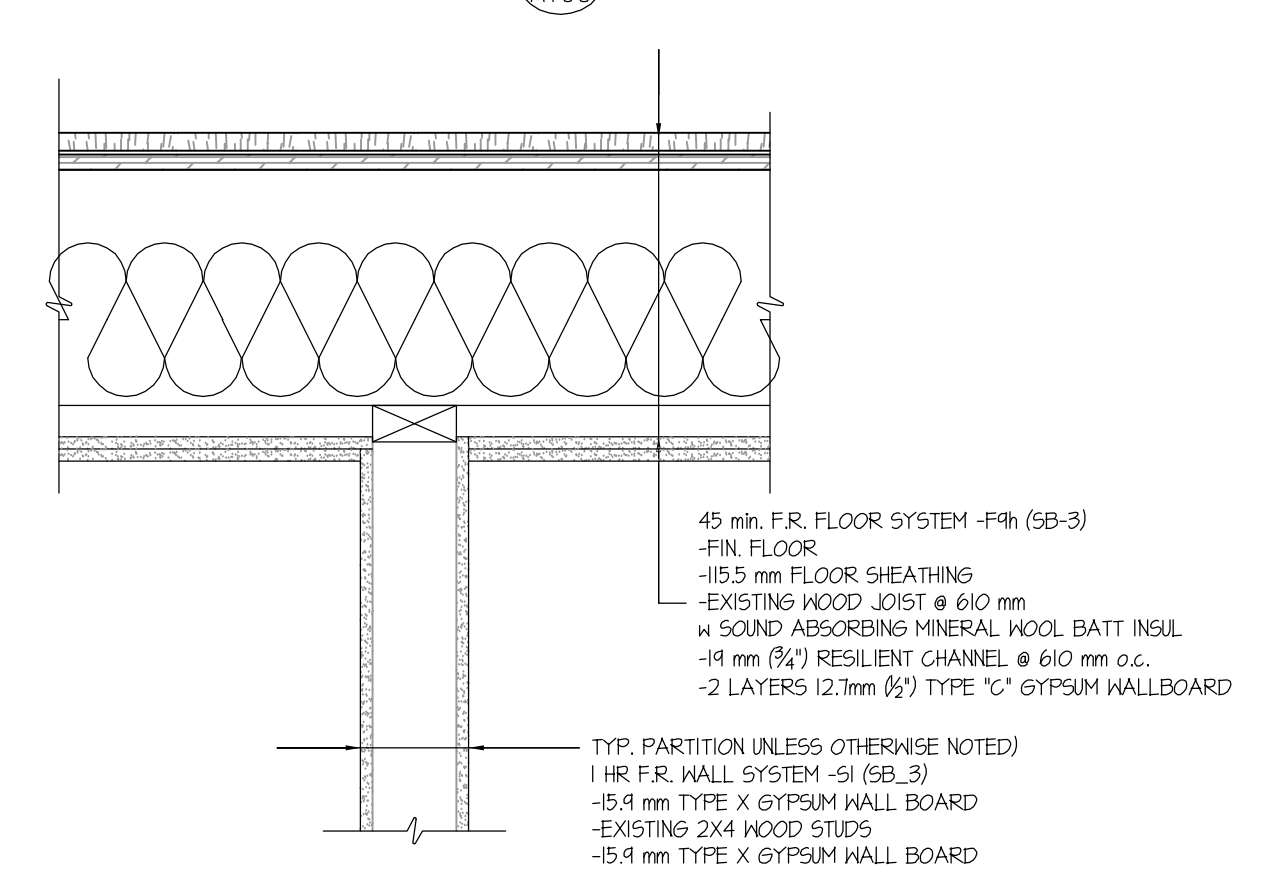
4 SECTION @ BATHROOM CEILING
SCALE: 1-1/2" = 1'-0"



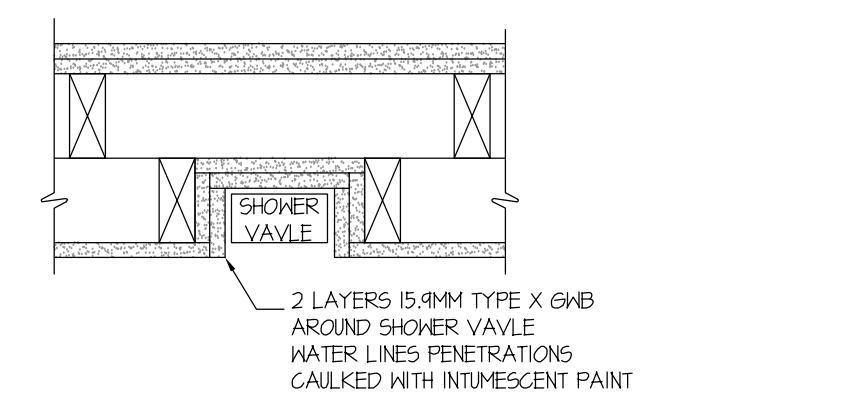
5 SECTION @ CEILING
SCALE: 1-1/2" = 1'-0"



6 SECTION @ EXISTING EXTERIOR WALL
SCALE: 1-1/2" = 1'-0"



7 SECTION @ P2 AND C1
SCALE: 1-1/2" = 1'-0"

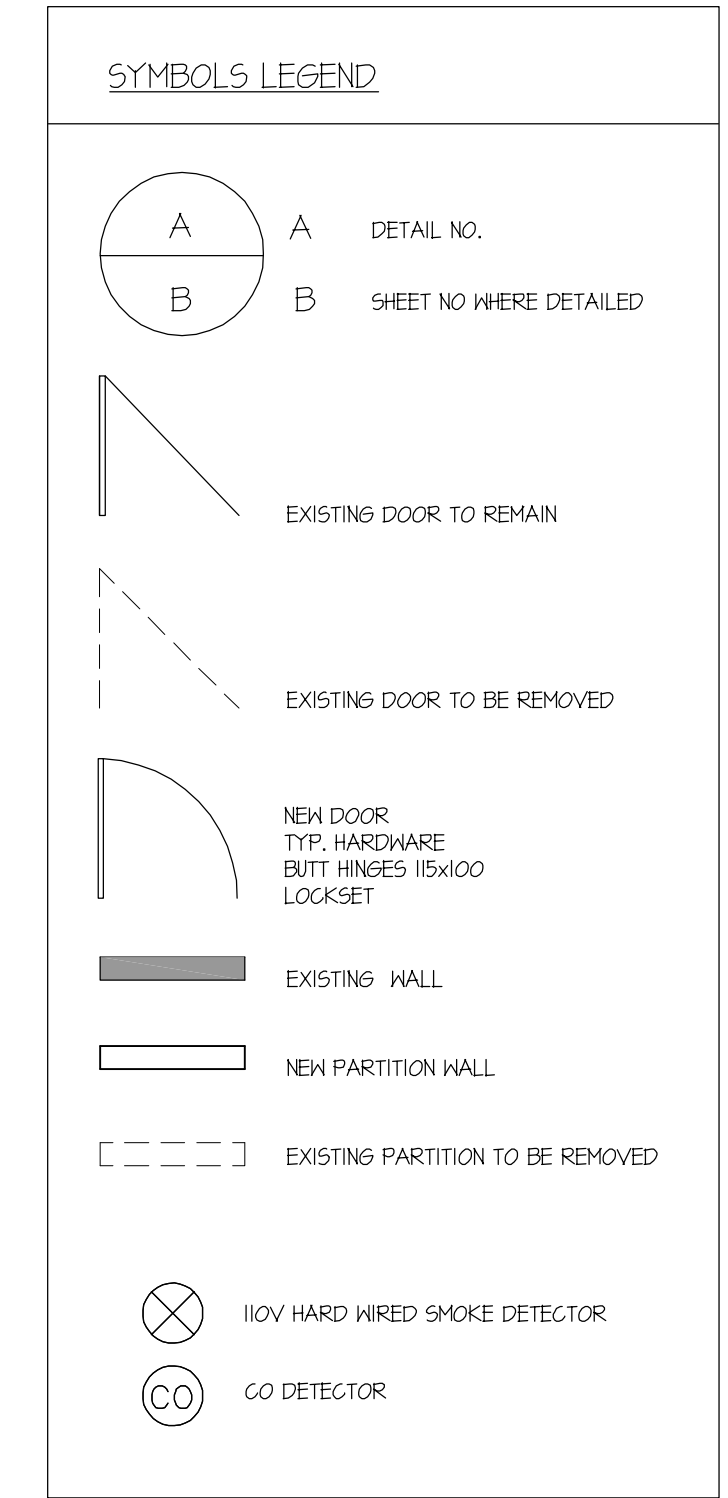


8 SECTION @ SHOWER VALVE
SCALE: 1-1/2" = 1'-0"

DO NOT SCALE DRAWINGS
CHECK AND VERIFY ALL DIMENSIONS BEFORE PROCEEDING WITH THE WORK.
DRAWINGS NOT TO BE USED FOR CONSTRUCTION UNLESS STAMPED AND SIGNED BY THE CONSULTANT.
THESE DRAWINGS HAVE BEEN DESIGNED IN CONFORMANCE WITH THE ONTARIO BUILDING CODE.

Revisions and Issues

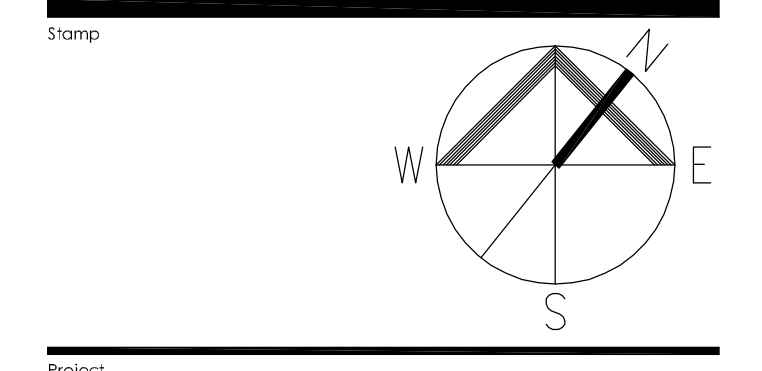
REV.	DATE	DESCRIPTION
1	2022/12/19	ISSUED FOR REVIEW
2		
3		



Mark Hillebrandt for CFR Custom Designs & Drafting has reviewed and taken responsibility for the design activities related to this project.
Individual BCIN 33378, Firm BCIN 36432

Mark Hillebrandt

JMJ DESIGN STUDIO
113 Queen Street
Belleville, ON K8N 1V6
jmjdesignstudio@gmail.com



ANN ST
UNIT RENOVATION

172-174 ANN STREET
BELLEVILLE, ONTARIO

UNIT 5 FLOOR PLAN

Drawn By	JMJ	Checked By	
Scale	AS NOTED	Date	DEC 2022
Project No.	2211	Revision	1
Drawing No.			A100